

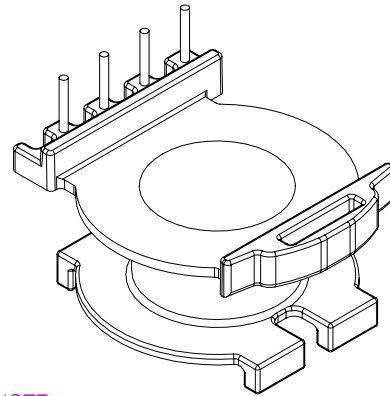
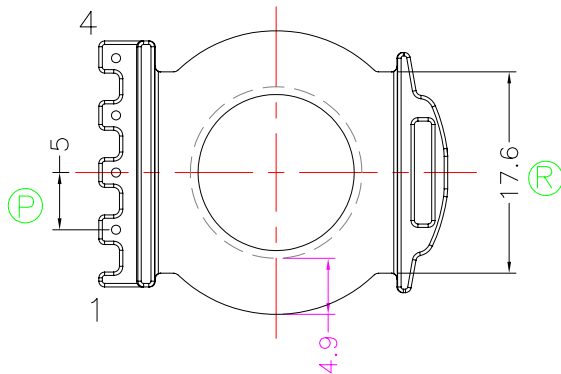
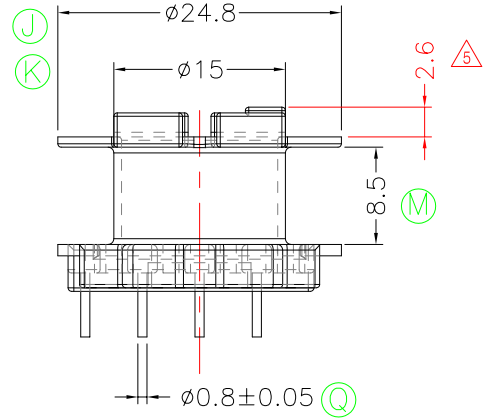
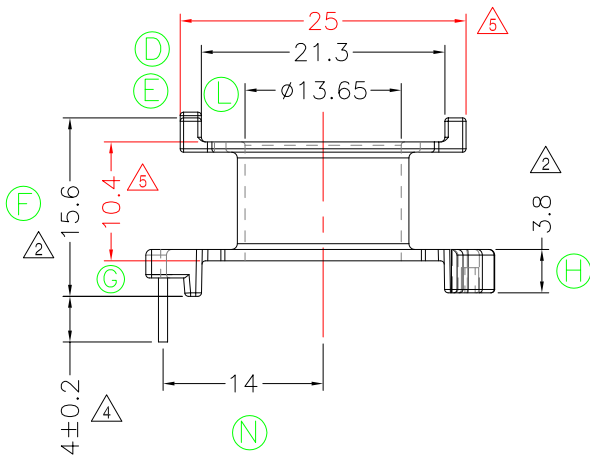
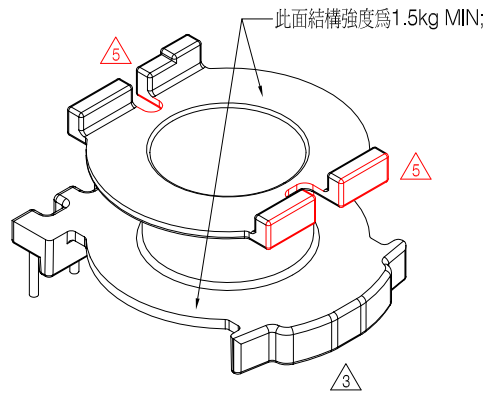
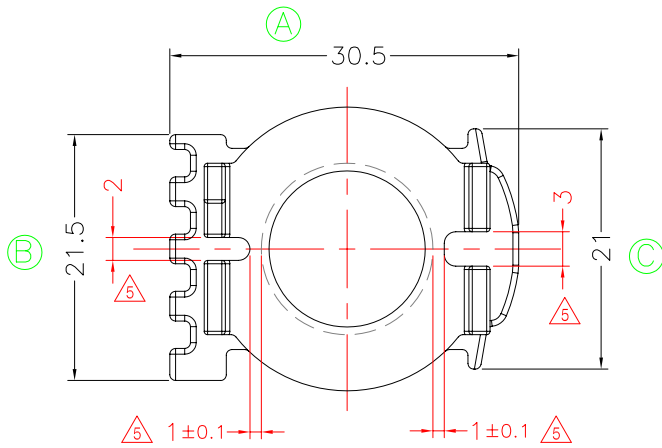


TRANSFORMER BOBBIN INDUSTRIAL CO.,LTD.

Tel : 86-769-88789999 Fax : 86-769-88789989
 http:// tbi-tw.com e-mail : tb6688@ms46.hinet.net

REVISIONS

REV	SYM	DRAFTER	CHECKER	DATE
3		X.H.GU	G.F.YANG	08/11/09
4		YAN.TANG	G.F.YANG	12/16/09
5		X.H.GU	G.F.YANG	07/08/10



NOTE:

- 1. 焊錫前拉力:1.0KG MIN, 焊錫後拉力:1.5KG MIN
- 2. Winding Space=8.5*4.9=41.65mm²

DWG NO. CC30-16.6-4P-TH-D-12

PART NO. MATERIAL (BOBBIN) MATERIAL (TERMINAL) TERMINAL (PLATING) PIN ALLOCATION NOTE

TBI-239-02041.1206 PM-9820 CP WIRE Sn ALL PIN S

H

TOLERANCE: 0<L<=4: ±0.1 4<L<=16: ±0.2 16<L<=63: ±0.3

UNIT : m / m

SCALE 1 : 1

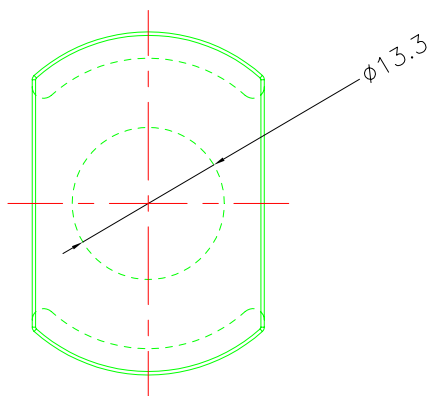
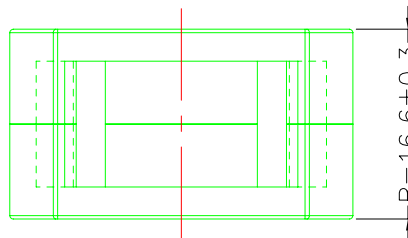
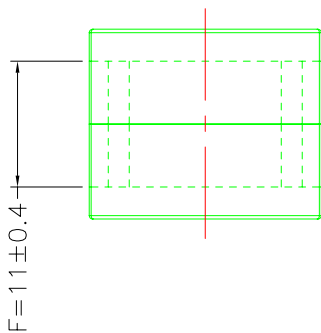
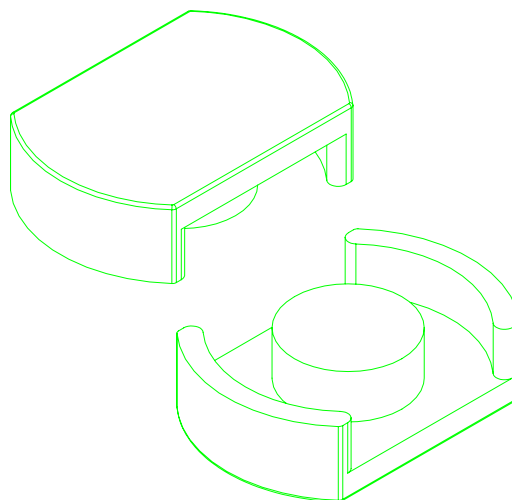
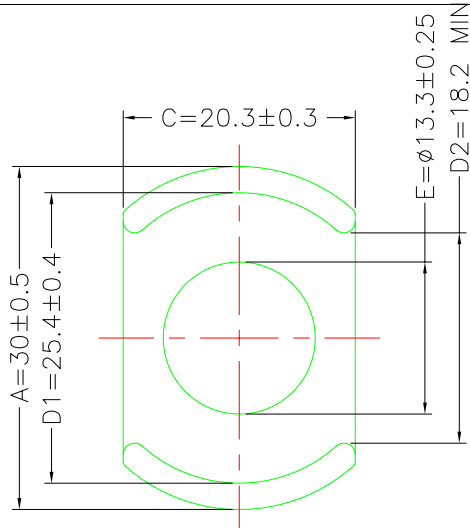
Finish: 1. PB wire Immersion Sn on terminal : Thickness:Sn plating,100,5 μm (200 μ inches) min,Base nickel 0.625 μm (25 μ inches) min.
 2. CP wire Immersion Sn on terminal : Thickness:Sn plating,100,5 μm (200 μ inches) min.
 3. Coplanarity deviation: 0.10 mm (0.004 inches) max.

REV 5

A-CORE
ELECTRICAL CO.

A-CORE JIANGMEN ELECTRONICS CO.,LTD
 江门安磁电子有限公司
 Tel : 86-750-3867791 Fax : 86-750-3867787

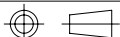
REVISIONS				
REV	SYM	DRAFTER	CHECKER	DATE
1		YAN.TANG	G.F.YANG	10/16/08
2				
3				



Core Set Parameters

$A_e=116.8\text{mm}^2$
 $L_e=43.6\text{mm}$
 $C1=0.373\text{mm}^{-1}$
 $V_e=5092.48\text{mm}^3$

DWG NO.	CC30/16.6-CORE				
PART NO.	MATERIAL (BOBBIN)	MATERIAL (TERMINAL)	TERMINAL (PLATING)	PIN ALLOCATION	NOTE
CC30/16.6	JPP-44A				
CC30/16.6	JPP-95				



UNIT : m/m

SCALE 3:2

Finish:

REV 1

A-CORE

A-CORE JIANGMEN ELECTRONICS CO.,LTD
江門安磁電子有限公司

TBI

TRANSFORMER BOBBIN
INDUSTRIAL CO.,LTD.

ELECTRICAL CO. Tel : 86-750-3867791 Fax : 86-750-3867787

Tel : 86-769-88789999 Fax : 86-769-88789989

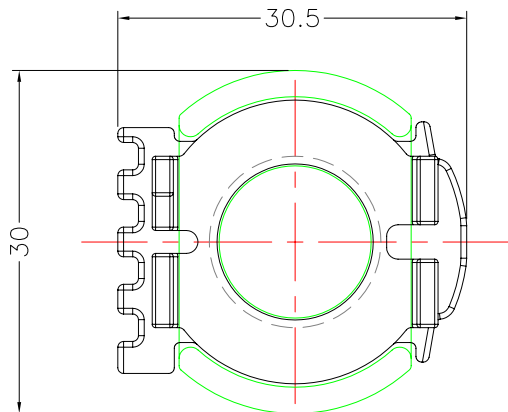
e-mail : sales@acore-ferrite.com

http:// tbi-tw.com e-mail : tb6688@ms46.hinet.net

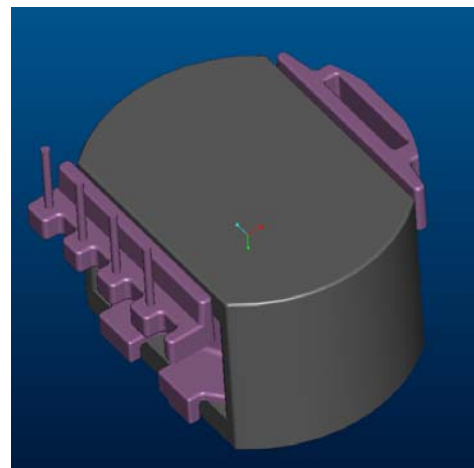
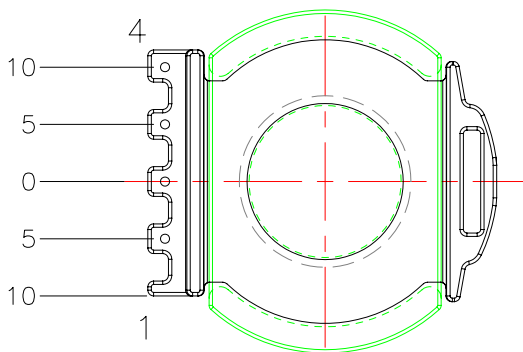
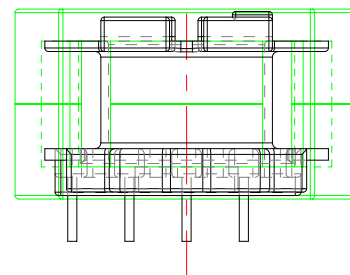
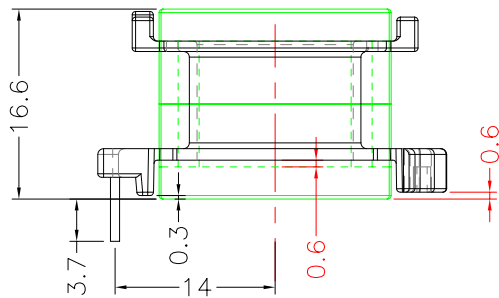
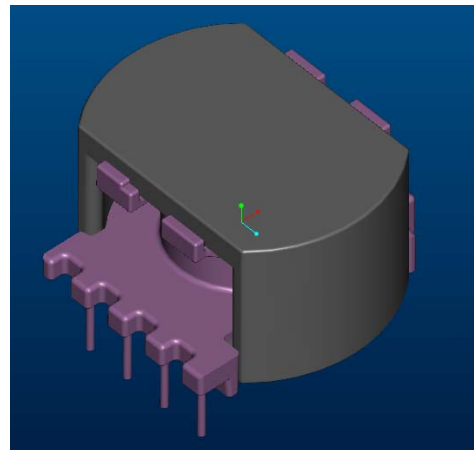
REVISIONS

REV	SYM	DRAFTER	CHECKER	DATE
△3		X.H.GU	G.F.YANG	08/11/09
△4		YAN.TANG	G.F.YANG	12/16/09
△5		X.H.GU	G.F.YANG	07/08/10

TOP



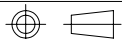
TOP



BOTTOM

BOTTOM

ITEM	PART NO.	MATERIAL	DWG NO.	Core Set Parameters
CORE	CC30/16.6	JPP-44A		$A_e=116.8\text{mm}^2$ $L_e=43.6\text{mm}$ $C_1=0.373\text{mm}^{-1}$ $V_e=5092.48\text{mm}^3$
CORE	CC30/16.6	JPP-95		
BOBBIN	TBI-239-02041.12XX		CC30-16.6-4P-TH-D-12	



UNIT : m / m

SCALE 1 : 1

REV

5