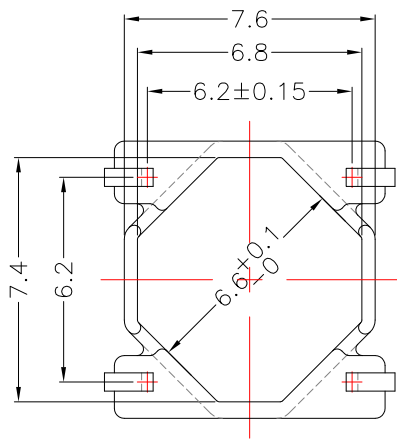
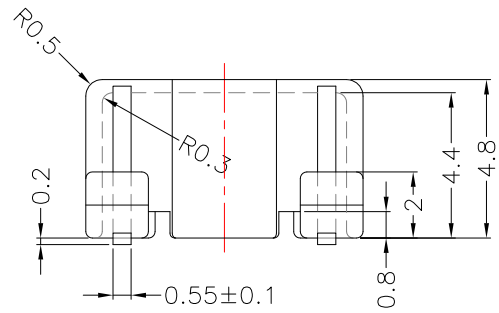
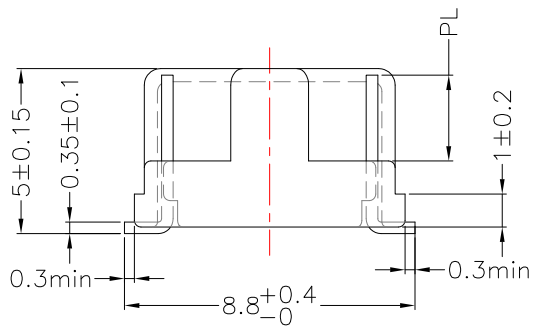
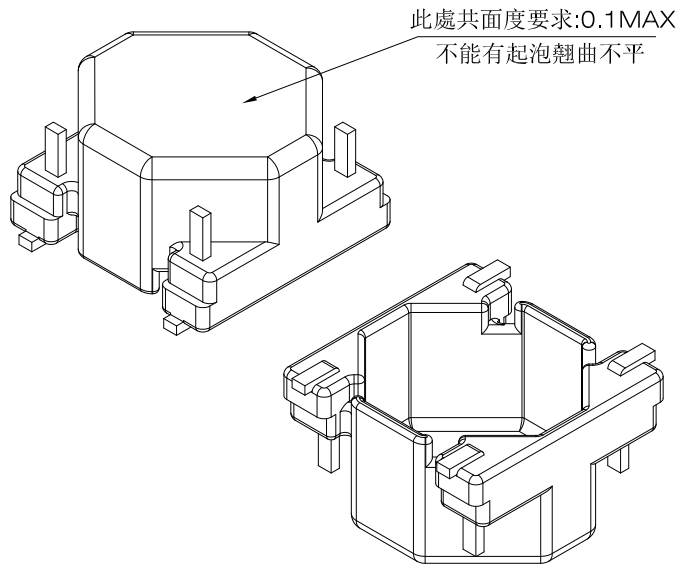
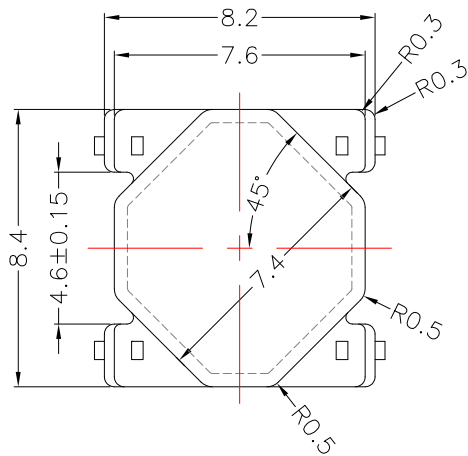




TRANSFORMER BOBBIN  
INDUSTRIAL CO.,LTD.

Tel : 86-769-88789999 Fax : 86-769-88789989  
http://tbi-tw.com e-mail : tb6688@ms46.hinet.net

REVISIONS				
REV	SYM	DRAFTER	CHECKER	DATE
△1		X.X.YUAN	G.F.YANG	08/14/14
△2				
△3				



Note:

- 1.一般公差:±0.1mm.
- 2.未註明R角者:R=0.2mm.
- 3.PIN拉力要求:1.1Kg min.
- 4.PIN共面度要求:0.1max.
- 5.鍍錫厚度要求:2.0 um min.
- 6.實際線材規格CP 0.6\*0.4

★成品後需 滾鍍

DWG NO.	H8X8-4P-L-F-11				
PART NO.	MATERIAL (BOBBIN)	MATERIAL (TERMINAL)	TERMINAL (PLATING)	PIN ALLOCATION	NOTE
TBI-113-20061.1106	PM-9630	錫銅合金(CP)	Sn	ALL PIN PL=2.6 <sup>+0.2</sup> / <sub>-0.3</sub>	H
TBI-113-20061.1113	PM-9630	鍍錫磷青銅(PB)	Sn	ALL PIN PL=2.6 <sup>+0.2</sup> / <sub>-0.3</sub>	
TBI-113-20061.1123	PM-9630	鍍錫磷青銅(PB)	Sn	ALL PIN PL=1.6±0.3	
TBI-113-20061.1133	PM-9630	鍍錫磷青銅(PB)	Sn	ALL PIN PL=2.4±0.3	
	TOLERANCE: ±0.1			UNIT : m/m	SCALE 1 : 1

Finish: 1. PB wire Immersion Sn on terminal : Thickness:Sn plating,100,5 μm (200 μ inches) min,Base nickel 0.625 μm (25 μ inches) min.  
2. CP wire Immersion Sn on terminal : Thickness:Sn plating,100,5 μm (200 μ inches) min.  
3. Coplanarity deviation: 0.10 mm (0.004 inches)max.

REV	1
-----	---