

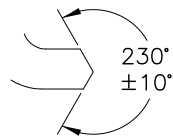
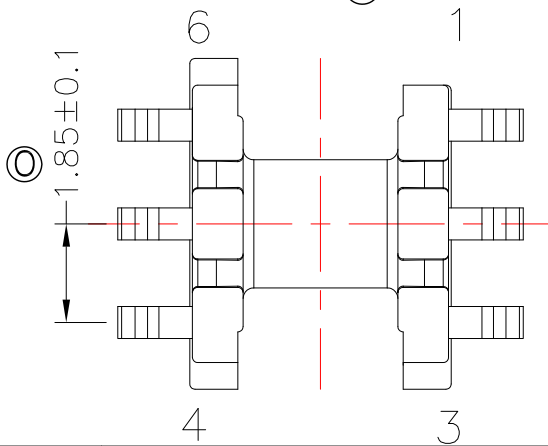
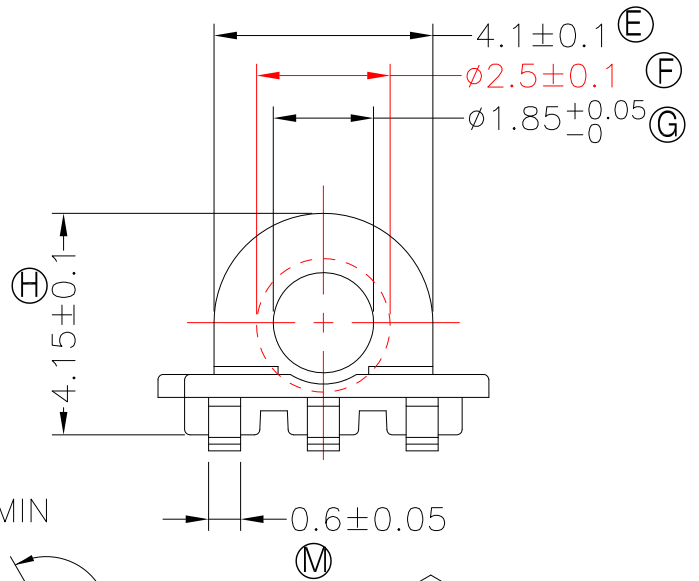
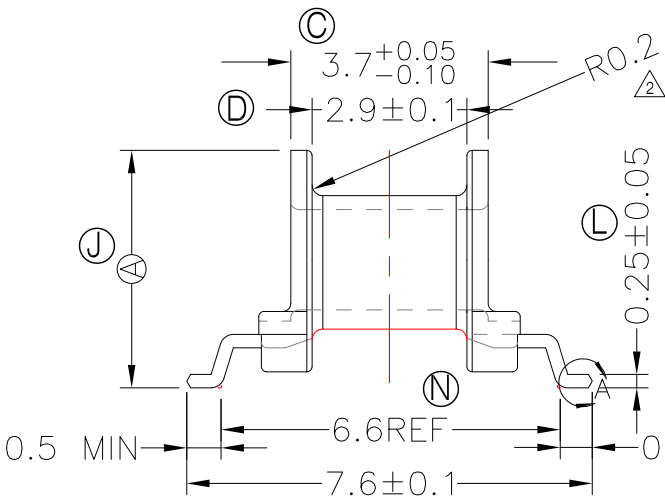
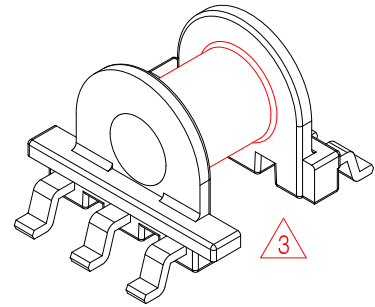
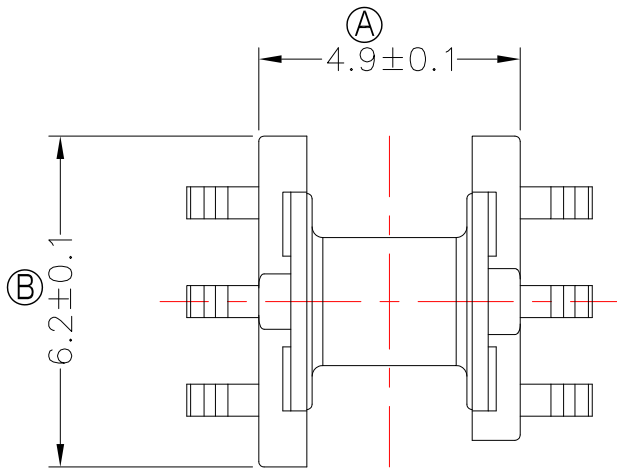


TRANSFORMER BOBBIN  
INDUSTRIAL CO.,LTD.

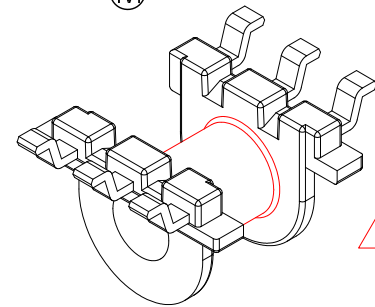
Tel : 86-769-88789999 Fax : 86-769-88789989  
http:// tbi-tw.com e-mail : tb6688@ms46.hinet.net

REVISIONS

REV	SYM	DRAFTER	CHECKER	DATE
△1		S.Y.TANG	G.F.YANG	12/26/08
△2		G.F.YANG	W.H.HSU	03/26/16
△3		F.LU	G.F.YANG	02/09/17



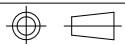
DETAIL:A  
PATENTED



模具共兩套,各28穴  
第一套模標識 H1,第二套模標識H2.  
拉力 : 1.0Kg Min

DWG NO. EP5-6P-GW-1.85-A7-11

PART NO.	MATERIAL (BOBBIN)	MATERIAL (TERMINAL)	TERMINAL (PLATING)	PIN ALLOCATION	NOTE
TBI-103-01171.1103	PM-9630	P.B	Sn	ALL PIN A = 4.45±0.15	
TBI-103-01171.1113	PM-9630	P.B	Sn	CUT PIN # 2, 5 A = 4.45±0.15	
TBI-103-01171.1123	PM-9630	P.B	Sn	ALL PIN A = 4.25+0.2/-0	
TBI-103-01171.1133	PM-9630	P.B	Sn	CUT PIN # 5 A = 4.45±0.15	



TOLERANCE: .X±0.15 .XX±0.10 .XXX±0.05

UNIT : m / m

SCALE 7 : 1

Finish: 1. Pb wire Immersion Sn on terminal : Thickness:Sn plating,100,5~10 μm (200~400 μ inches) ,Base nickel 0.625~2 μm (25~80 μ inches) .  
2. CP wire Immersion Sn on terminal : Thickness:Sn plating,100,5 μm (200 μ inches) min.  
3. Coplanarity deviation: 0.10 mm (0.004 inches )max.

REV 3