

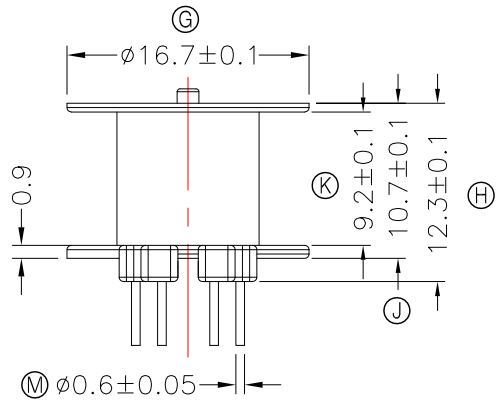
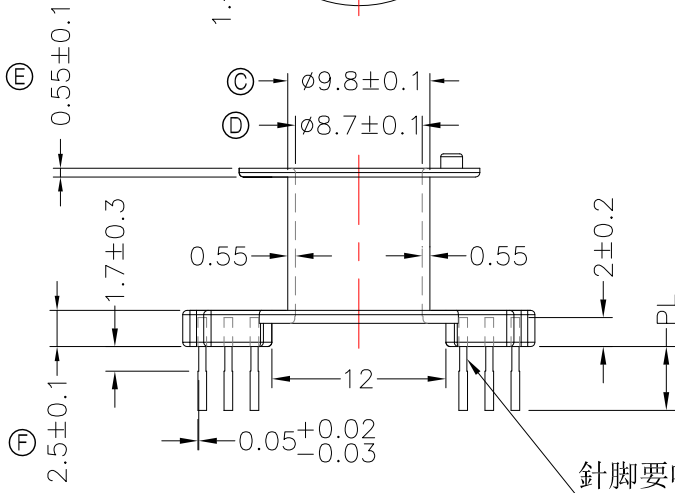
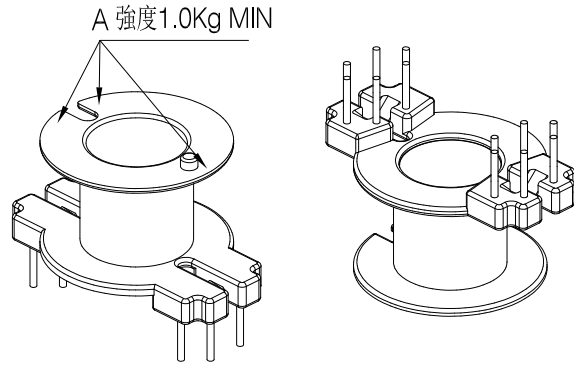
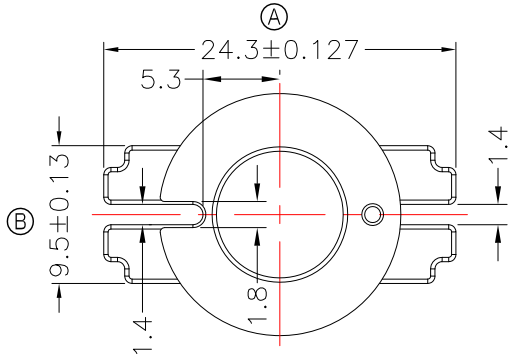


TRANSFORMER BOBBIN
INDUSTRIAL CO.,LTD.

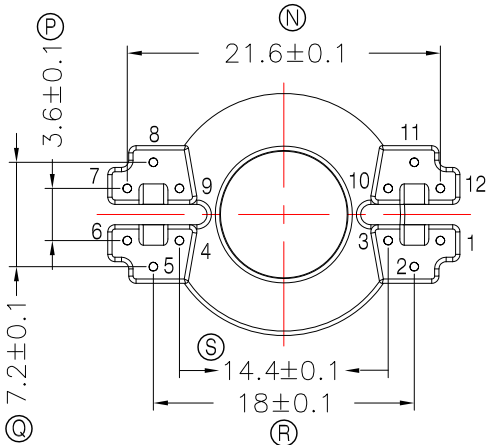
Tel : 86-769-88789999 Fax : 86-769-88789989
http:// tbi-tw.com e-mail : tb6688@ms46.hinet.net

REVISIONS

REV	SYM	DRAFTER	CHECKER	DATE
①		G.F.YANG	W.H.HSU	01/19/16
②				
③				



針腳要咬花外露

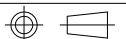


NOTE:

- 1.耐壓4.0Kv /1.5mA 60S;
- 2.焊錫溫度:450°±10° 3SEC;
- 3.焊錫前拉力:1.0KG MIN,焊錫後拉力:1.5KG MIN;
- 4.任意一點強度須1.5kg MIN;(除以下測試點.A處為1.0kg MIN).

DWG NO. RM8-12P-TH-D4-11

PART NO.	MATERIAL (BOBBIN)	MATERIAL (TERMINAL)	TERMINAL (PLATING)	PIN ALLOCATION	NOTE
TBI-208-05441.1106	PM-9630	CP WIRE	Sn	ALL PIN PL=6.0±0.2	
TBI-208-05441.1116	PM-9630	CP WIRE	Sn	CUT PIN#1,6,7,9,10,11,12 PL=6.0±0.2	
TBI-208-05441.1126	PM-9630	CP WIRE	Sn	CUT PIN#1,4,5,6,7,9,10 PL=6.0±0.2	
TBI-208-05441.1136	PM-9630	CP WIRE	Sn	CUT PIN#1,4,5,6,7,10 PL=6.0±0.2	
TBI-208-05441.1146	PM-9630	CP WIRE	Sn	CUT PIN#1,4,6,7,8,9,10 PL=6.0±0.2	
TBI-208-05441.1156	PM-9630	CP WIRE	Sn	CUT PIN#1,3,5,6,7,8,11,12 PL=5.0±0.2	
TBI-208-05441.1166	PM-9630	CP WIRE	Sn	CUT PIN#1,3,4,5,7,8,10,12 PL=7.0±0.2	
TBI-208-05441.1176	PM-9630	CP WIRE	Sn	CUT PIN#1,3,4,5,7,8,10,12 PL=5.0±0.2	
TBI-208-05441.1186	PM-9630	CP WIRE	Sn	CUT PIN#1,3,4,5,7,8,10,12 PL=6.0±0.2	
TBI-208-05441.1196	PM-9630	CP WIRE	Sn	CUT PIN#4,5,6,7,8,9 PL=6.0±0.2	
TBI-208-05441.11A6	PM-9630	CP WIRE	Sn	CUT PIN#4,5,6,7,8,9,10 PL=6.0±0.2	
TBI-208-05441.11B6	PM-9630	CP WIRE	Sn	CUT PIN#4,5,7,8 PL=6.0±0.2	



TOLERANCE: 0<L<=4:±0.1 4<L<=16:±0.2 16<L<=63:±0.3

UNIT : m / m

SCALE 2 : 1

Finish: 1. PB wire Immersion Sn on terminal : Thickness:Sn plating,100%,5 μm (200 μ inches) min,Base nickel 0.625 μm (25 μ inches) min.
2. CP wire Immersion Sn on terminal : Thickness:Sn plating,100%,5 μm (200 μ inches) min.
3. Coplanarity deviation: 0.10 mm (0.004 inches) max.

REV 1