

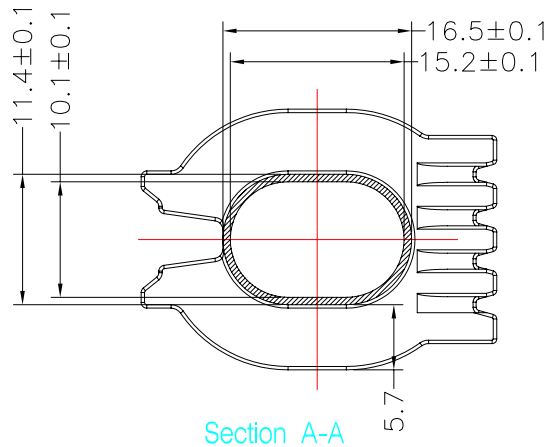
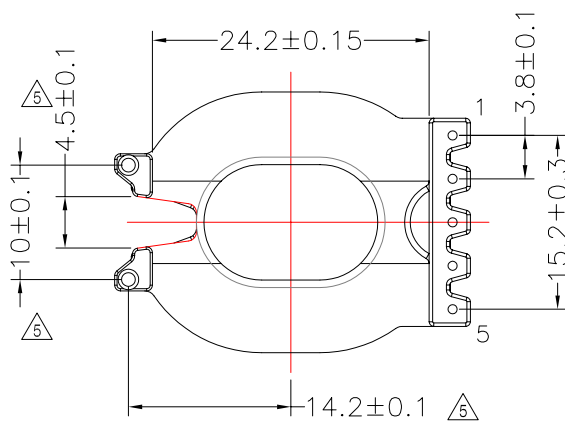
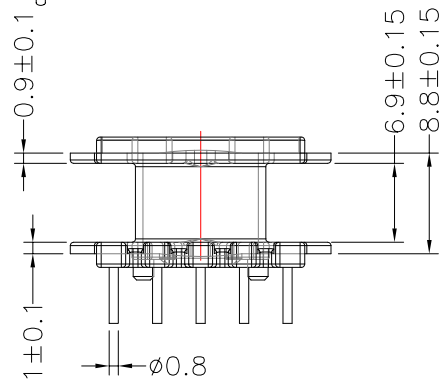
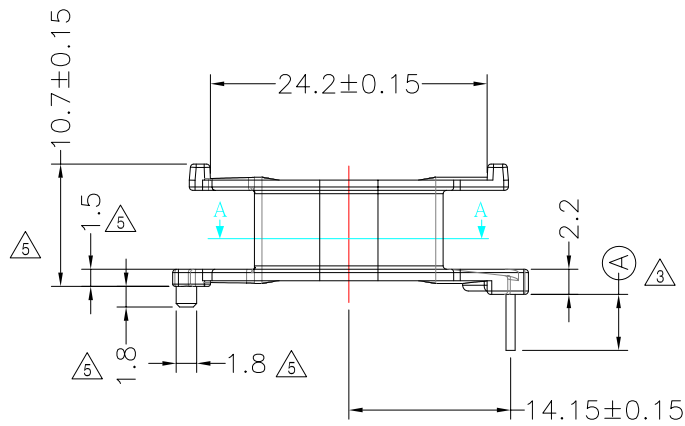
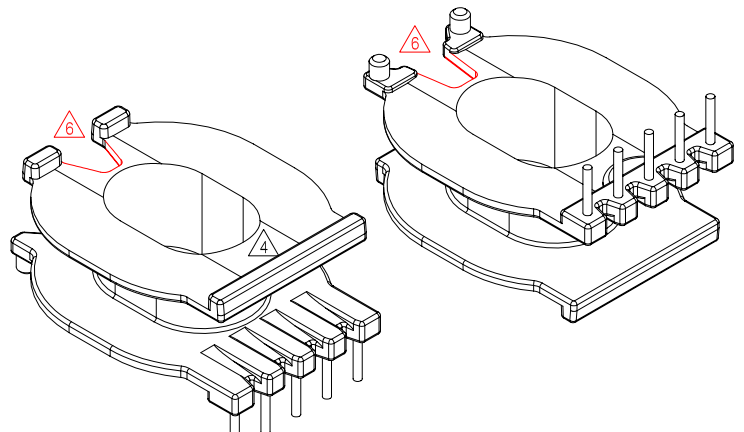
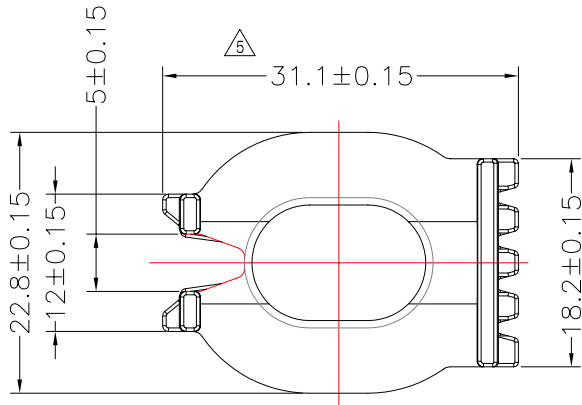


**TRANSFORMER BOBBIN
INDUSTRIAL CO.,LTD.**

Tel : 86-769-88789999 Fax : 86-769-88789989
http:// tbi-tw.com e-mail : tb6688@ms46.hinet.net

REVISIONS

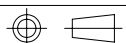
REV	SYM	DRAFTER	CHECKER	DATE
△4		G.F.YANG	W.H.HSU	03/02/10
△5		G.F.YANG	W.H.HSU	04/14/10
△6		YAN.TANG	G.F.YANG	07/06/10



NOTE:
WINDING SPACE: 6.9mm*5.7mm=39.33mm²

DWG NO. ATQ28-14.5D-5P-TH-F-12

PART NO.	MATERIAL (BOBBIN)	MATERIAL (TERMINAL)	TERMINAL (PLATING)	PIN ALLOCATION	NOTE
TBI-238-07061.1206	PM-9820	CP WIRE	Sn	ALL PIN (A) =4.9±0.2	S
TBI-238-07061.1216	PM-9820	CP WIRE	Sn	CUT PIN #3 (A) =6.0±0.2	H
TBI-238-07061.1226	PM-9820	CP WIRE	Sn	ALL PIN (A) =5.5±0.2	
TBI-238-07061.1236	PM-9820	CP WIRE	Sn	CUT PIN #3 (A) =5.5±0.2	



TOLERANCE: 0<L<=4:±0.1 4<L<=16:±0.2 16<L<=63:±0.3

UNIT : m / m

SCALE 1 : 1

Finish: 1. PB wire Immersion Sn on terminal : Thickness:Sn plating,100,5 μm (200 μ inches) min,Base nickel 0.625 μm (25 μ inches) min.
2. CP wire Immersion Sn on terminal : Thickness:Sn plating,100,5 μm (200 μ inches) min.
3. Coplanarity deviation: 0.10 mm (0.004 inches) max.

REV 6

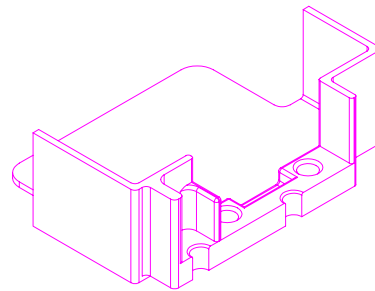
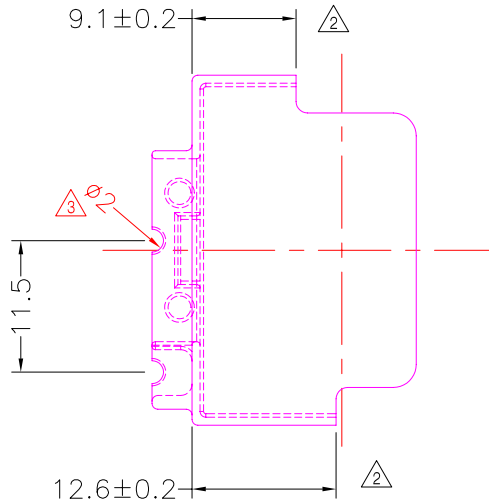
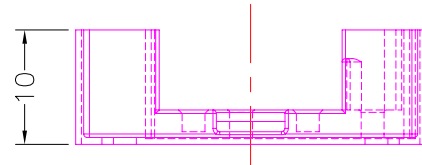
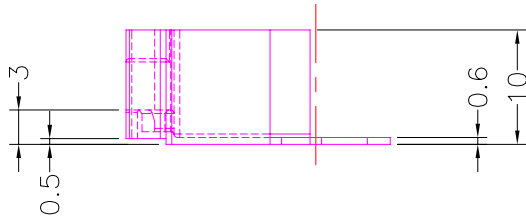
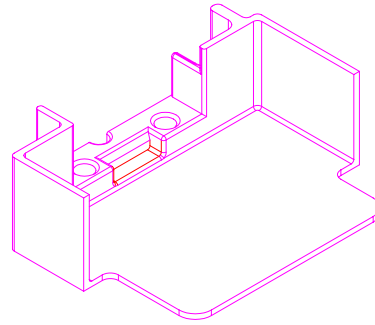
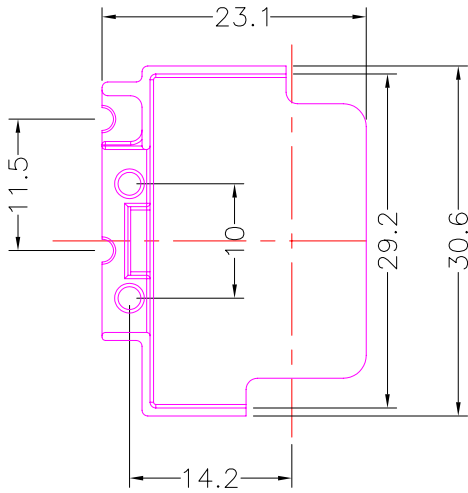


**TRANSFORMER BOBBIN
INDUSTRIAL CO.,LTD.**

Tel : 86-769-88789999 Fax : 86-769-88789989
 http:// tbi-tw.com e-mail : tb6688@ms46.hinet.net

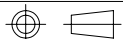
REVISIONS

REV	SYM	DRAFTER	CHECKER	DATE
△1		G.F.YANG	W.H.HSU	04/14/10
△2		G.F.YANG	W.H.HSU	05/20/10
△3		G.F.YANG	W.H.HSU	06/30/10



DWG NO. ATQ28-14.5D-CASE-H-91

PART NO.	MATERIAL (BOBBIN)	MATERIAL (TERMINAL)	TERMINAL (PLATING)	PIN ALLOCATION	NOTE
TBI-238-07081.91C	PET-FR530(BK)	NA	NA	NA	S
					H



TOLERANCE: 0<L<=4:±0.1 4<L<=16:±0.2 16<L<=63:±0.3

UNIT : m / m

SCALE 1 : 1

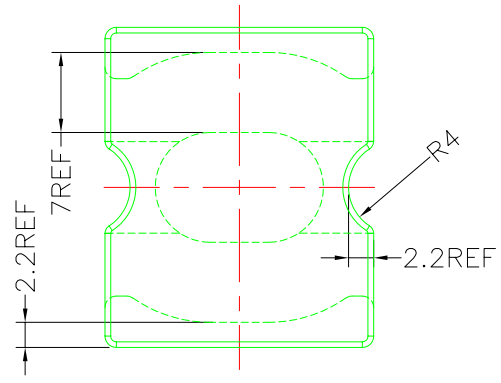
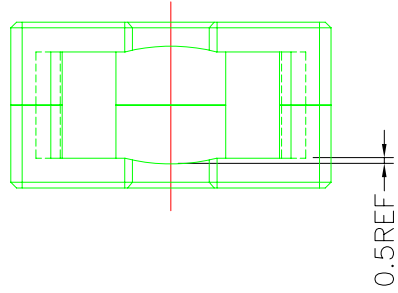
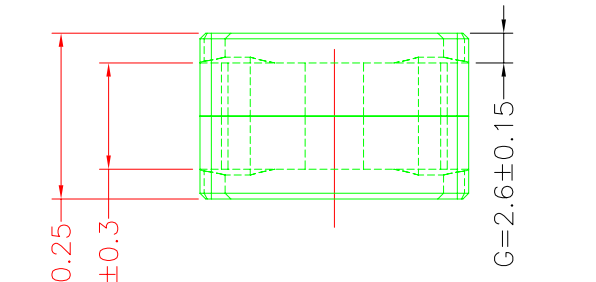
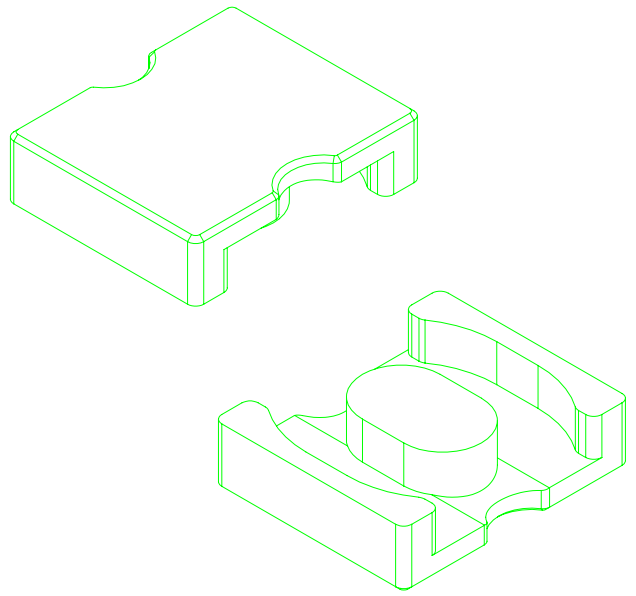
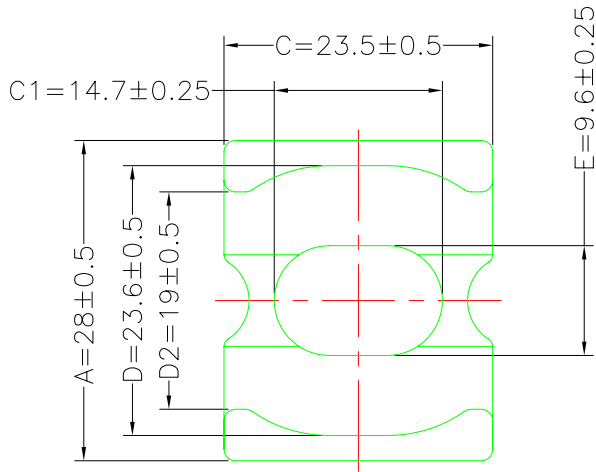
Finish: 1. PB wire Immersion Sn on terminal : Thickness:Sn plating,100,5 μm (200 μ inches) min,Base nickel 0.625 μm (25 μ inches) min.
 2. CP wire Immersion Sn on terminal : Thickness:Sn plating,100,5 μm (200 μ inches) min.
 3. Coplanarity deviation: 0.10 mm (0.004 inches) max.

REV 3

A-CORE
ELECTRICAL CO.

A-CORE JIANGMEN ELECTRONICS CO.,LTD
江門安磁電子有限公司
Tel : 86-750-3867791 Fax : 86-750-3867787

REVISIONS				
REV	SYM	DRAFTER	CHECKER	DATE
①		G.F.YANG	W.H.HSU	01/04/10
②		X.H.GU	G.F.YANG	01/25/10
③				



Cross section area

A1(Limbs)mm²: 142.44mm²
A2(Back wall)²: 122.2mm²
A3(Center post)²: 121.34mm²
Ae=124mm²
Le=41.4mm
C1=0.334mm⁻¹
Ve=5133.6mm³

DWG NO.	ATQ28/14.5D-CORE				
PART NO.	MATERIAL (CORE)	MATERIAL (TERMINAL)	TERMINAL (PLATING)	PIN ALLOCATION	NOTE
ATQ28/14.5D	JPP-44A				
ATQ28/14.5D	JPP-95				
	TOLERANCE: 0<L<=4:±0.1 4<L<=16:±0.2 16<L<=63:±0.3			UNIT : m / m	SCALE 1 : 1
				REV	2

A-CORE

A-CORE JIANGMEN ELECTRONICS CO.,LTD
江門安磁電子有限公司

TBI

TRANSFORMER BOBBIN
INDUSTRIAL CO.,LTD.

ELECTRICAL CO. Tel : 86-750-3867791 Fax : 86-750-3867787

Tel : 86-769-88789999 Fax : 86-769-88789989

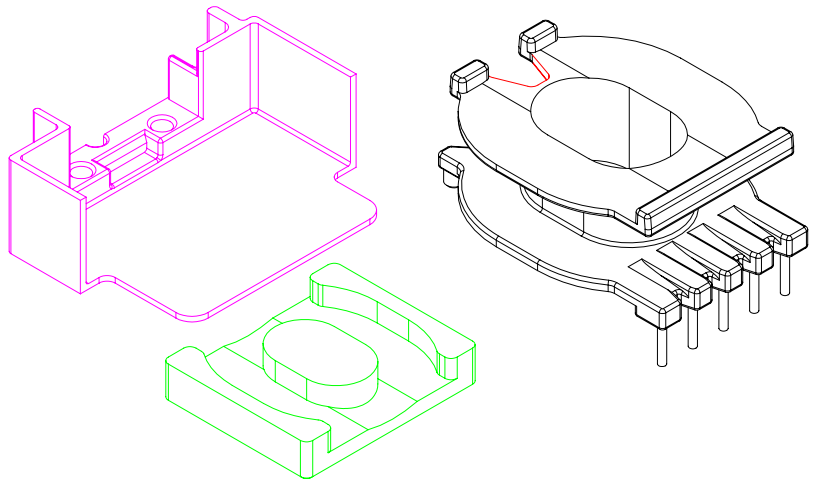
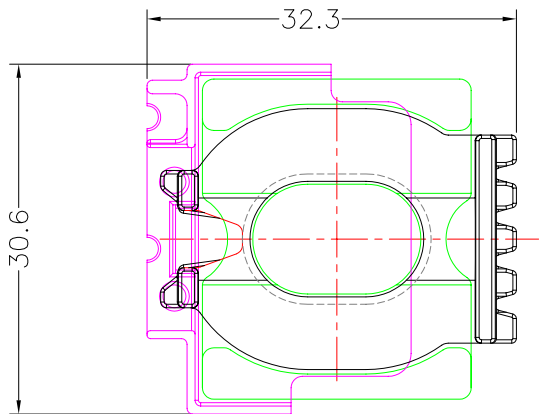
e-mail : sales@acore-ferrite.com

http:// tbi-tw.com e-mail : tb6688@ms46.hinet.net

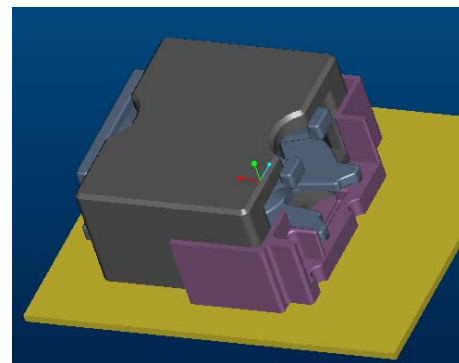
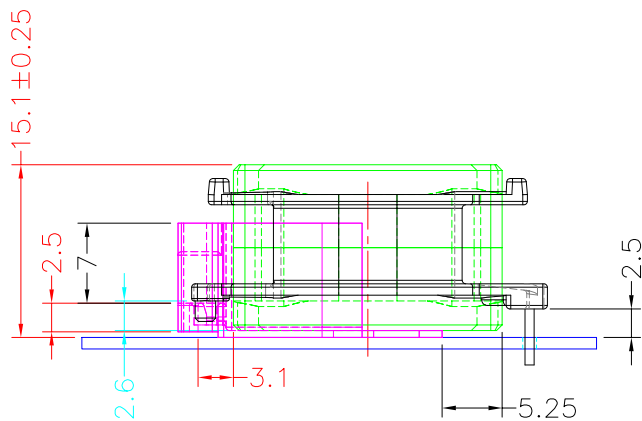
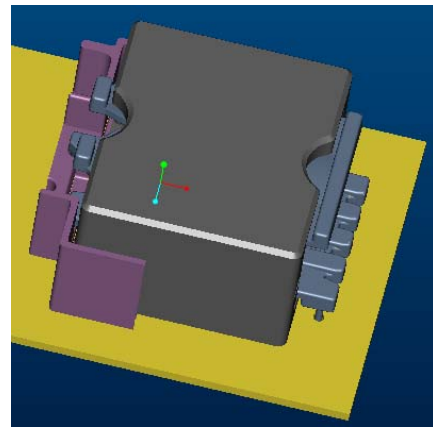
REVISIONS

REV	SYM	DRAFTER	CHECKER	DATE
△4		G.F.YANG	W.H.HSU	03/02/10
△5		G.F.YANG	W.H.HSU	04/14/10
△6		YAN.TANG	G.F.YANG	07/06/10

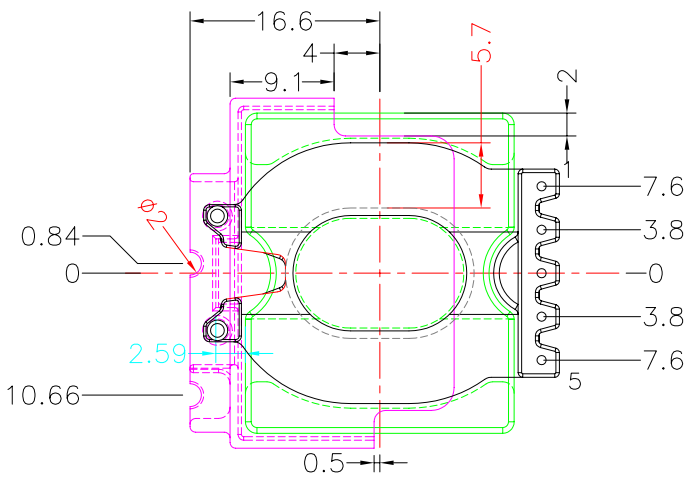
TOP



TOP

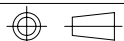


BOTTOM



BOTTOM

ITEM	PART NO.	MATERIAL	DWG NO.	Core Set Parameters
CORE	ATQ28/14.5D	JPP-44A		$A_e=124\text{mm}^2$ $L_e=41.4\text{mm}$ $C_1=0.334\text{mm}^{-1}$ $V_e=5133.6\text{mm}^3$
CORE	ATQ28/14.5D	JPP-95		
BOBBIN	TBI-238-07061.12XX		ATQ28-14.5D-5P-TH-F-12	
CASE	TBI-238-07081.91C		ATQ28-14.5D-CASE-H-91	



UNIT : m/m

SCALE 1 : 1

REV

6