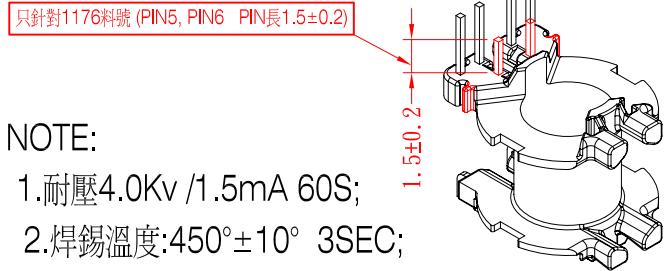
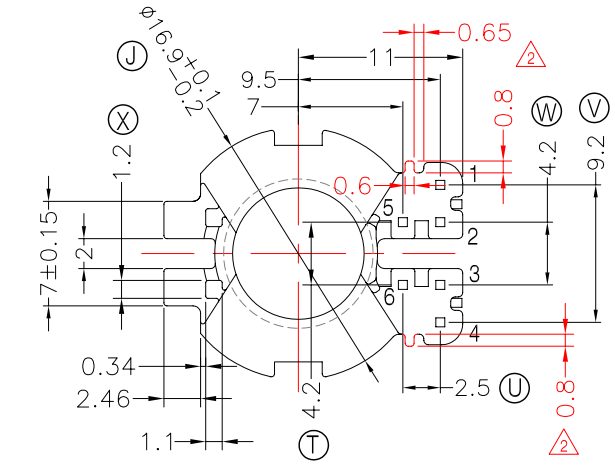
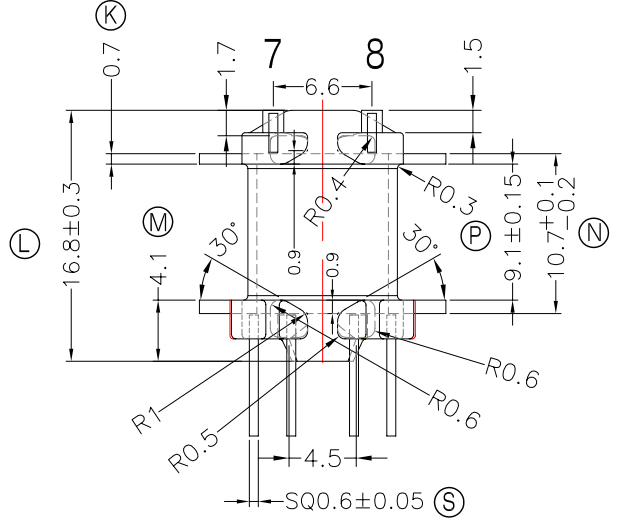
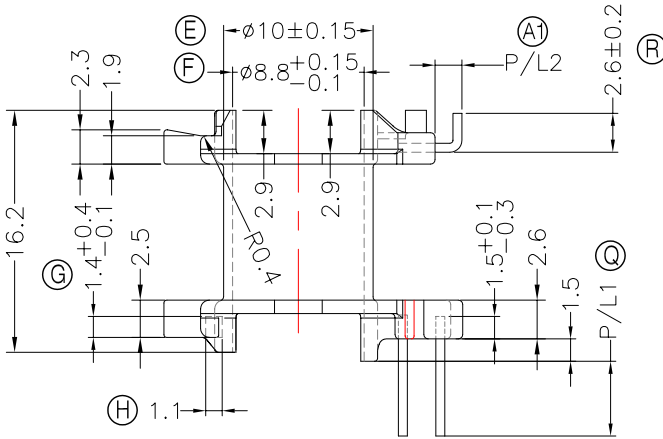
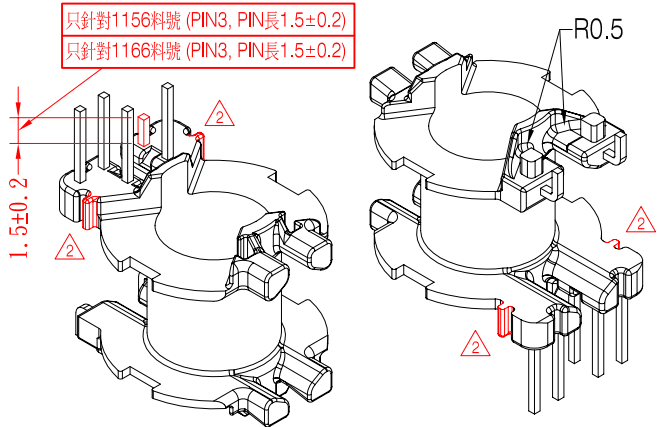
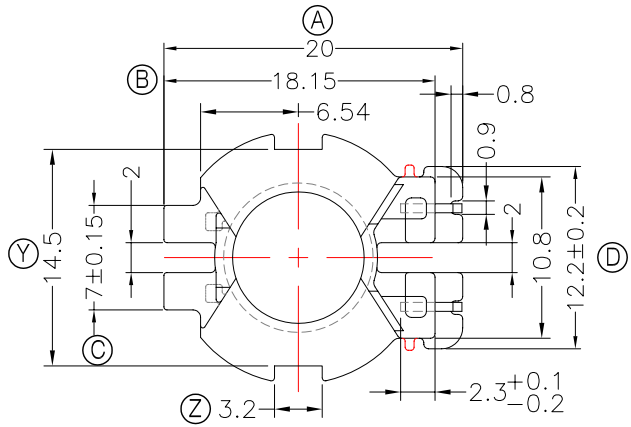




TRANSFORMER BOBBIN  
INDUSTRIAL CO.,LTD.

Tel : 86-769-88789999 Fax : 86-769-88789989  
http:// tbi-tw.com e-mail : tb6688@ms46.hinet.net

REVISIONS				
REV	SYM	DRAFTER	CHECKER	DATE
①		X.H.GU	G.F.YANG	08/12/16
②		F.LU	G.F.YANG	01/13/17
③				



NOTE:  
1.耐壓4.0Kv /1.5mA 60S;  
2.焊錫溫度:450°±10° 3SEC;  
3.任意一點強度須1.5kg MIN;  
4.焊錫前拉力:1.0KG MIN;焊錫後拉力:1.5KG MIN

DWG NO.	LQ20-16.8-8P-TH-A1-11				
PART NO.	MATERIAL (BOBBIN)	MATERIAL (TERMINAL)	TERMINAL (PLATING)	PIN ALLOCATION	NOTE
TBI-247-01111.1106	PM-9630	CP WIRE	Sn	ALL PIN P/L1=5.0±0.2 P/L2=1.8±0.2	S
TBI-247-01111.1116	PM-9630	CP WIRE	Sn	CUT PIN#4, P/L1=5.0±0.2 P/L2=1.8±0.2	H
TBI-247-01111.1126	PM-9630	CP WIRE	Sn	ALL PIN P/L1=5.0±0.2 P/L2=1.2±0.2	
TBI-247-01111.1136	PM-9630	CP WIRE	Sn	CUT PIN#1, P/L1=5.0±0.2 P/L2=1.2±0.2	
TBI-247-01111.1146	PM-9630	CP WIRE	Sn	CUT PIN#1,6 P/L1=5.0±0.2 P/L2=1.8±0.2	
TBI-247-01111.1156	PM-9630	CP WIRE	Sn	CUT PIN#1, P/L1=5.0±0.2 P/L2=1.2±0.2(PIN#3長度1.5±0.2,從插PIN底面量起.)	
TBI-247-01111.1166	PM-9630	CP WIRE	Sn	CUT PIN#1, P/L1=5.0±0.2 P/L2=1.8±0.2(PIN#3長度1.5±0.2,從插PIN底面量起.)	
TBI-247-01111.1176	PM-9630	CP WIRE	Sn	ALL PIN P/L1=5.0±0.2 P/L2=1.8±0.2(PIN#5,6長度1.5±0.2,從插PIN底面量起.)	

Finish: 1. PB wire Immersion Sn on terminal : Thickness:Sn plating,100%,5 μm (200 μ inches) min,Base nickel 0.625 μm (25 μ inches) min.  
2. CP wire Immersion Sn on terminal : Thickness:Sn plating,100%,5 μm (200 μ inches) min.  
3. Coplanarity deviation: 0.10 mm (0.004 inches) max.

TOLERANCE:0<L<=4:±0.1 4<L<=16:±0.2 16<L<=63:±0.3 UNIT : m / m SCALE 1 : 1

REV	2
-----	---