

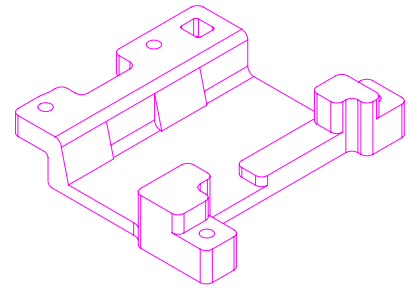
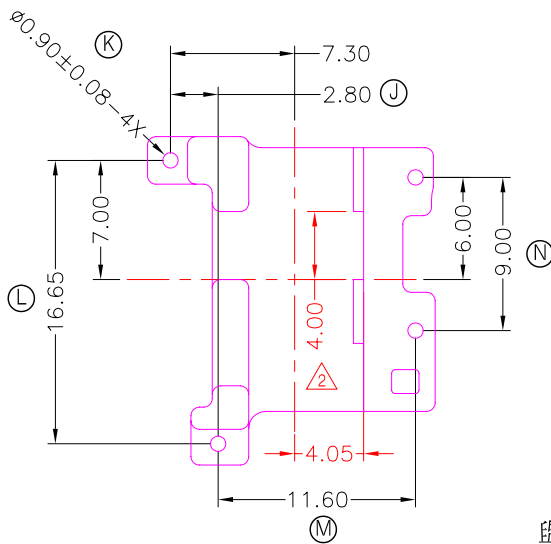
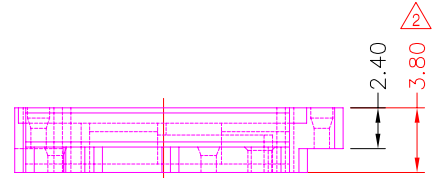
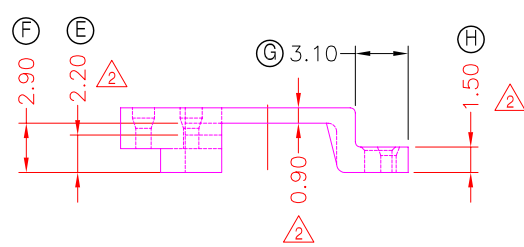
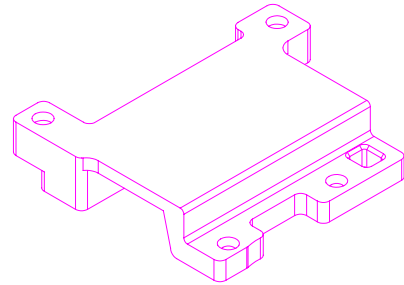
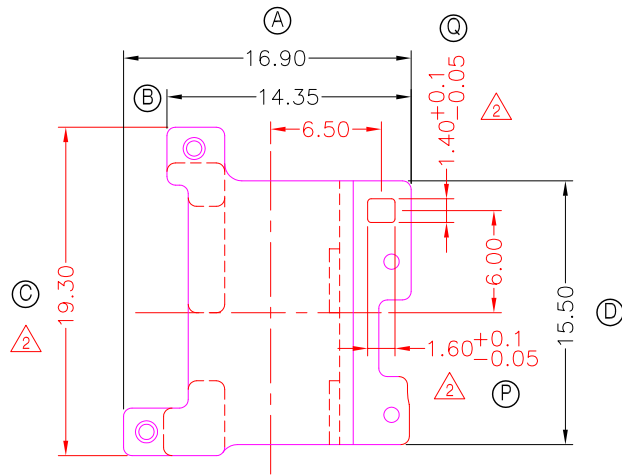


TRANSFORMER BOBBIN
INDUSTRIAL CO.,LTD.

Tel : 86-769-88789999 Fax : 86-769-88789989
http:// tbi-tw.com e-mail : tb6688@ms46.hinet.net

REVISIONS

REV	SYM	DRAFTER	CHECKER	DATE
1		X.H.GU	G.F.YANG	05/10/17
2		X.H.GU	G.F.YANG	06/26/17
3				



NOTE:

- 1.耐壓4.0Kv /1.5mA 60S;
- 2.任意一點強度須1.5kg MIN;

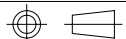
與TBI-238-46031.17XX(ATQ15.5-14.3-4P-TH-C-17)配套使用;

DWG NO. ATQ15.5-14.3-BASE-C-11

PART NO.	MATERIAL (BOBBIN)	MATERIAL (TERMINAL)	TERMINAL (PLATING)	PIN ALLOCATION	NOTE
TBI-238-46031.11B	PM-9630 \triangle_2				

TBI-238-46031.11B

PM-9630 \triangle_2



TOLERANCE: 0<L<=4:±0.1 4<L<=16:±0.2 16<L<=63:±0.3

UNIT : m / m

SCALE 1 : 1

Finish: 1. PB wire Immersion Sn on terminal : Thickness:Sn plating,100%,5 μm (200 μ inches) min,Base nickel 0.625 μm (25 μ inches) min.
2. CP wire Immersion Sn on terminal : Thickness:Sn plating,100%,5 μm (200 μ inches) min.
3. Coplanarity deviation: 0.10 mm (0.004 inches) max.

REV 2