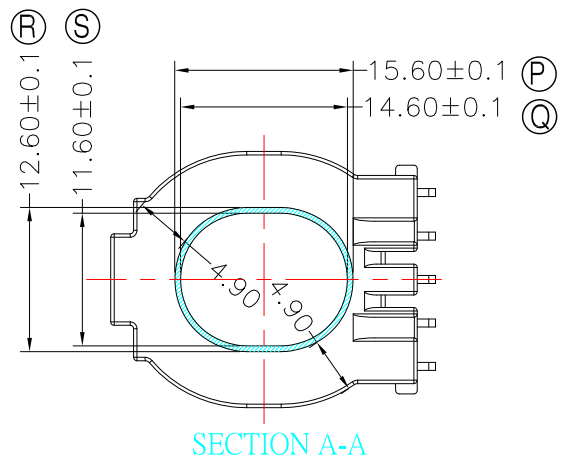
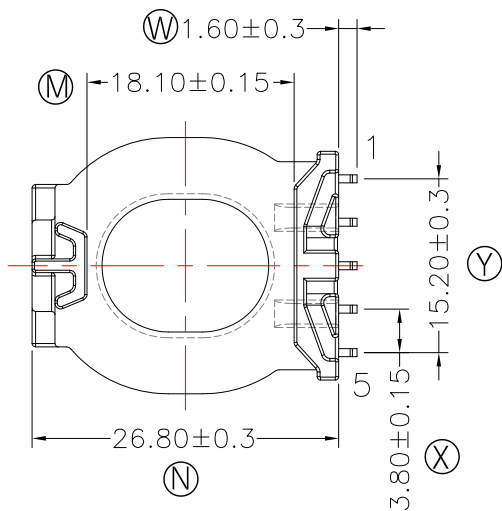
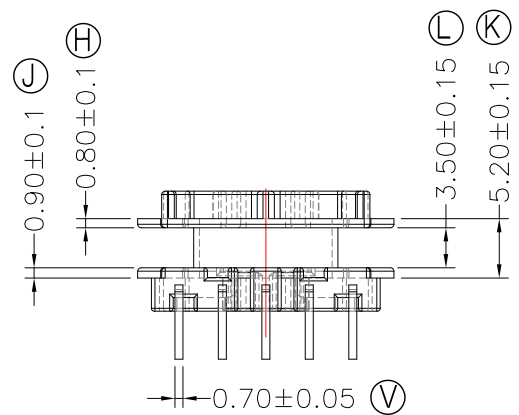
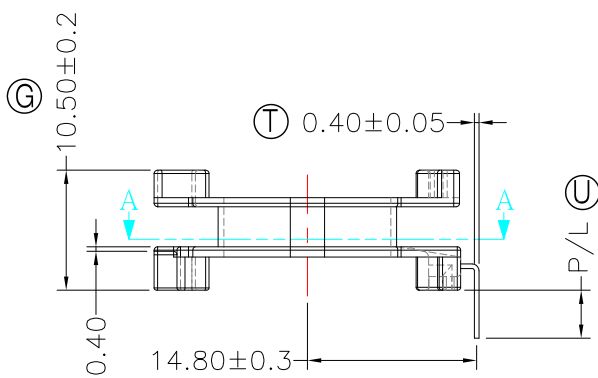
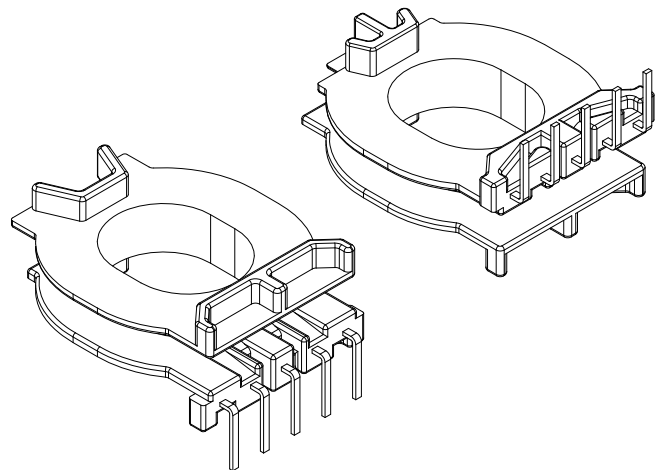
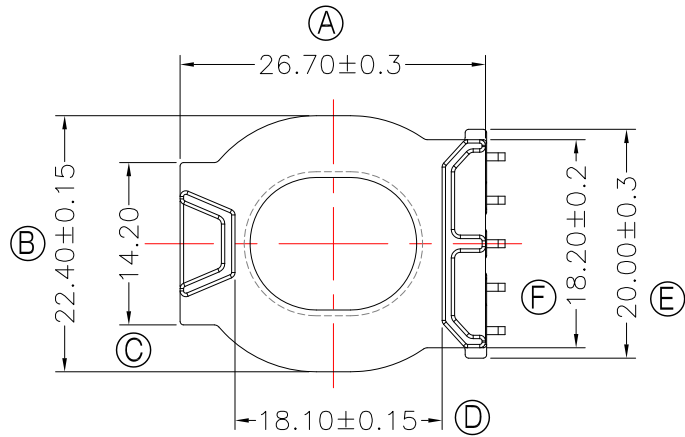




**TRANSFORMER BOBBIN
INDUSTRIAL CO.,LTD.**

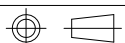
Tel : 86-769-88789999 Fax : 86-769-88789989
http:// tbi-tw.com e-mail : tb6688@ms46.hinet.net

REVISIONS				
REV	SYM	DRAFTER	CHECKER	DATE
①		X.H.GU	G.F.YANG	08/19/13
②				
③				



DWG NO. ATQ27-11.6-5P-TL-8H-11

PART NO.	MATERIAL (BOBBIN)	MATERIAL (TERMINAL)	TERMINAL (PLATING)	PIN ALLOCATION	NOTE
TBI-238-03881.1106	PM-9630	C.P WIRE	Sn	ALL PIN P/L=4.2±0.2	H
TBI-238-03881.1116	PM-9630	C.P WIRE	Sn	NO PIN#3 P/L=5±0.2	



TOLERANCE: 0<L<=4:±0.1 4<L<=16:±0.2 16<L<=63:±0.3

UNIT : m / m

SCALE 1 : 1

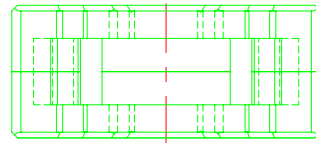
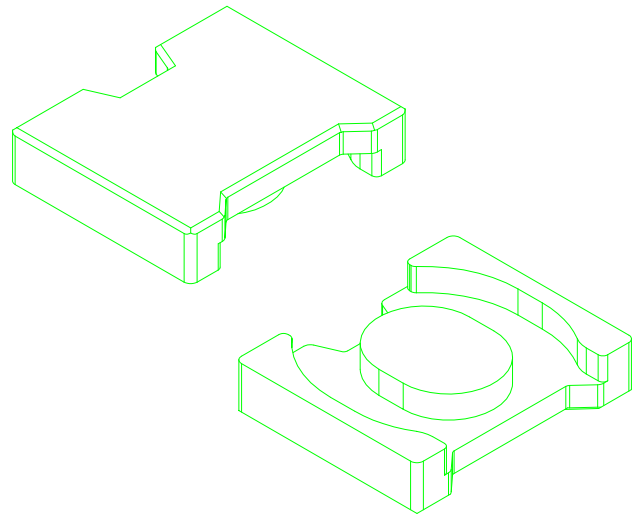
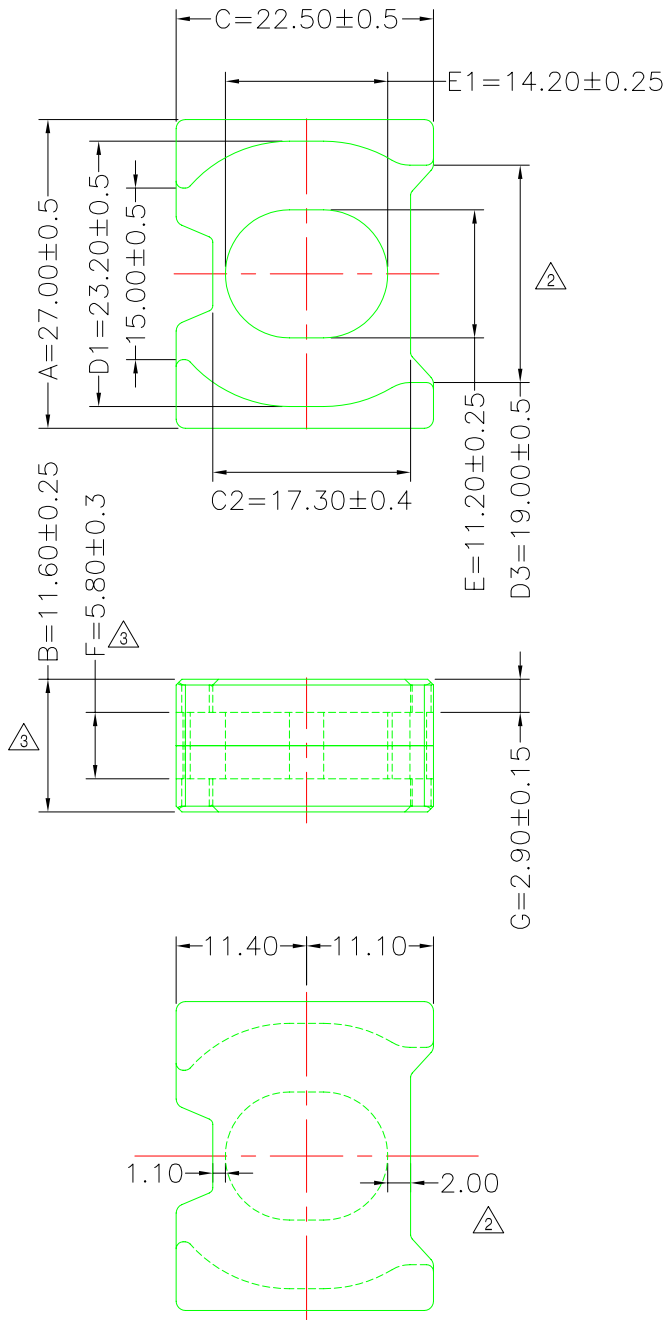
Finish: 1. PB wire Immersion Sn on terminal : Thickness:Sn plating,100%,5 μm (200 μ inches) min,Base nickel 0.625 μm (25 μ inches) min.
2. CP wire Immersion Sn on terminal : Thickness:Sn plating,100%,5 μm (200 μ inches) min.
3. Coplanarity deviation: 0.10 mm (0.004 inches) max.

REV 1

A-CORE
ELECTRICAL CO.

A-CORE JIANGMEN ELECTRONICS CO.,LTD
 江门安磁电子有限公司
 Tel: 86-750-3867791 Fax : 86-750-3867787

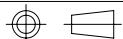
REVISIONS				
REV	SYM	DRAFTER	CHECKER	DATE
△1		G.F.YANG	W.H.HSU	12/04/08
△2		G.F.YANG	W.H.HSU	12/05/08
△3		G.F.YANG	W.H.HSU	12/17/08



Core Set Parameters

$A_e=131.4\text{mm}^2$
 $L_e=38.1\text{mm}$
 $C_1=0.290\text{mm}^{-1}$
 $V_e=5006.34\text{mm}^3$

DWG NO.	ATQ27/11.6-CORE			
PART NO.	MATERIAL (CORE)			NOTE
ATQ27/11.6	JPP-44A			
ATQ27/11.6	JPP-95			



TOLERANCE: $0 < L \leq 4: \pm 0.1$ $4 < L \leq 16: \pm 0.2$ $16 < L \leq 63: \pm 0.3$

UNIT : m / m

SCALE 1 : 1

Finish: 1. Pb wire Immersion Sn on terminal : Thickness:Sn plating,100,5 μm (200 μ inches) min,Base nickel 0.625 μm (25 μ inches) min.
 2. CP wire Immersion Sn on terminal : Thickness:Sn plating,100,5 μm (200 μ inches) min.
 3. Coplanarity deviation: 0.10 mm (0.004 inches) max.

REV 3

A-CORE

A-CORE JIANGMEN ELECTRONICS CO.,LTD
 江門安磁電子有限公司

TBI

TRANSFORMER BOBBIN
 INDUSTRIAL CO.,LTD.

ELECTRICAL CO. Tel : 86-750-3867791 Fax : 86-750-3867787

Tel : 86-769-88789999 Fax : 86-769-88789989

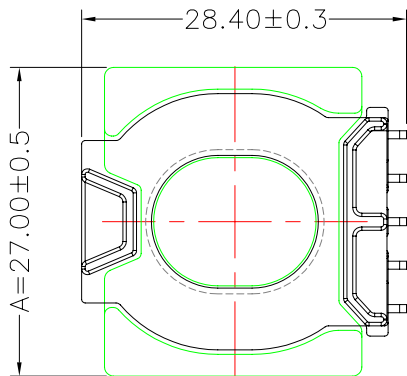
e-mail : sales@acore-ferrite.com

http:// tbi-tw.com e-mail : tb6688@ms46.hinet.net

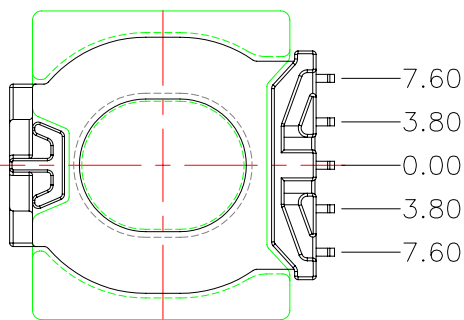
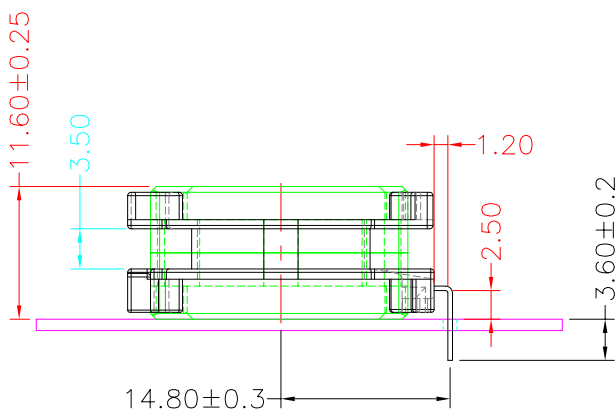
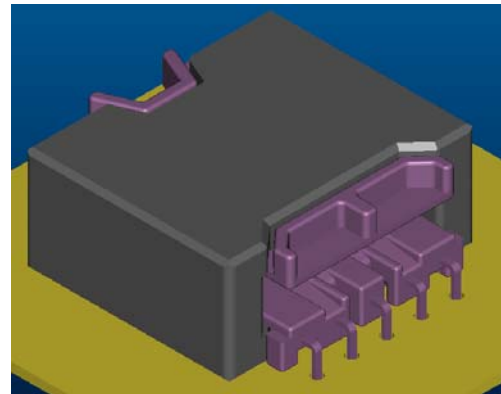
REVISIONS

REV	SYM	DRAFTER	CHECKER	DATE
△1		X.H.GU	G.F.YANG	08/19/13
△2				
△3				

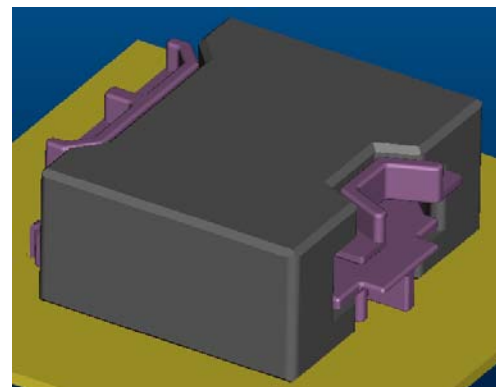
TOP



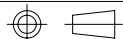
TOP



BOTTOM



ITEM	PART NO.	MATERIAL	DWG NO.	Core Set Parameters
CORE	ATQ27/11.6	JPP-44A		Ae=131.4mm ² Le=38.1mm C1=0.290mm ⁻¹ Ve=5006.34mm ³
CORE	ATQ27/11.6	JPP-95		
BOBBIN	TBI-238-03881.11XX		ATQ27-11.6-5P-TL-8H-11	



UNIT : m/m

SCALE 1 : 1

REV 1