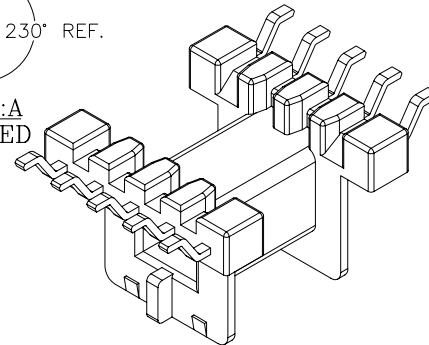
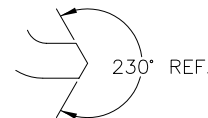
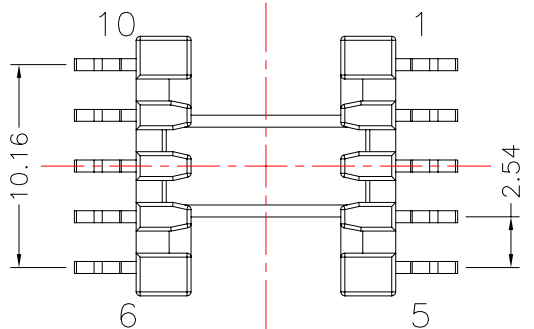
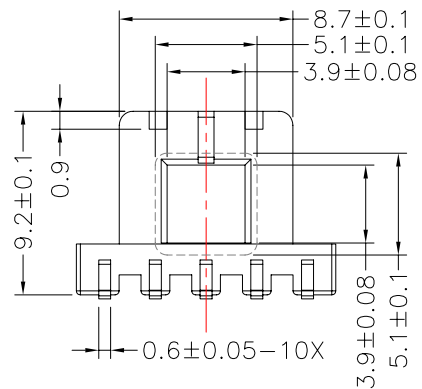
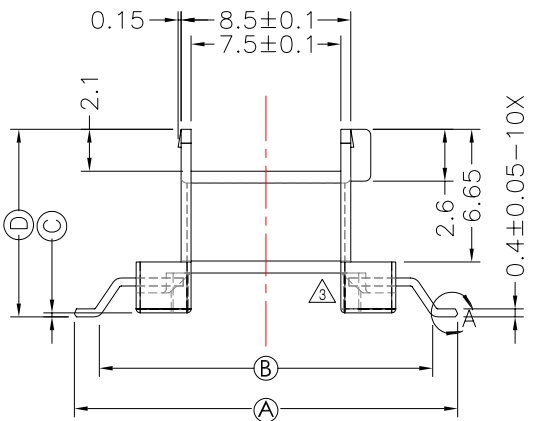
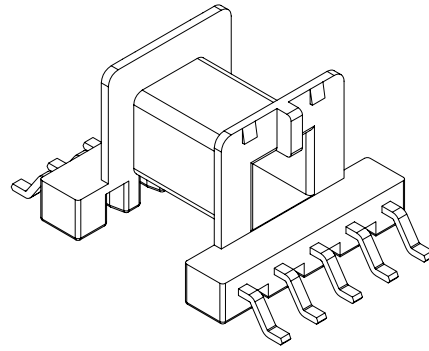
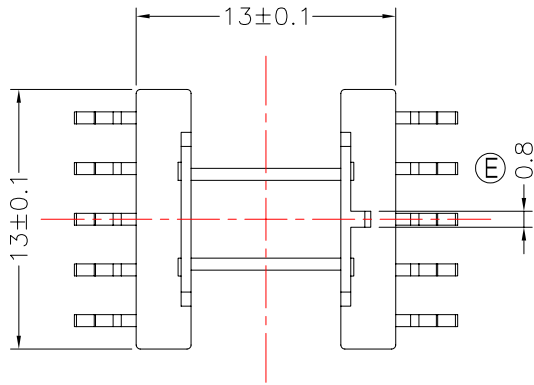




**TRANSFORMER BOBBIN INDUSTRIAL CO.,LTD.**

Tel : 86-769-88789999 Fax : 86-769-88789989  
 http:// tbi-tw.com e-mail : tb6688@ms46.hinet.net

REVISIONS				
REV	SYM	DRAFTER	CHECKER	DATE
2		Y.G.HSU	W.H.HSU	06/20/07
3		S.Y.TANG	W.H.HSU	09/26/07
4		S.Y.TANG	S.Y.TANG	02/05/08



DWG NO. EF12.6-10P-GW-2.54-0G-1

PART NO.	MATERIAL (BOBBIN)	MATERIAL (TERMINAL)	TERMINAL(PLATING)	PIN ALLOCATION
TBI-105-01071.103	PM-9630	PB	Sn	ALL PIN; A =19.2±0.2; B =16.7 Ref; C =0.2±0.1; D =9.6 MAX
TBI-105-01071.113	PM-9630	PB	Sn	ALL PIN; A =17.2±0.2; B =15.1 Ref; C =0.2±0.1; D =9.6 MAX
TBI-105-01071.123	PM-9630	PB	Sn	ALL PIN; A =16.8±0.2; B =15.24 Ref; C =0.2±0.1; D =9.6 MAX
TBI-105-01071.133	PM-9630	PB	Sn	ALL PIN; A =17.2±0.2; B =15.1 Ref; C =1.0±0.1; D =10.2±0.15
TBI-105-01071.143	PM-9630	PB	Sn	Cut Pin #6,7,8,9,10; A =17.2±0.2; B =15.1 Ref; C =0.2±0.1; D =9.6 MAX
TBI-105-01071.153	PM-9630	PB	Sn	CUT PIN #3,6,7,8,9,10; A =17.2±0.2; B =15.1 Ref; C =0.2±0.1; D =9.6 MAX
TBI-105-01071.163	PM-9630	PB	Sn	CUT PIN # 3; A =16.8±0.2; B =15.24 Ref; C =0.2±0.1; D =9.6 MAX
TBI-105-01071.173	PM-9630	PB	Sn	ALL PIN; A =19.2±0.2; B =16.7 Ref; C =0.2±0.1; D =9.5 MAX; E =0.75±0.08
TBI-105-01071.183	PM-9630	PB	Sn	ALL PIN; A =17.7±0.2; B =15.3 Ref; C =1.0±0.1; D =10.2±0.15
TBI-105-01071.193	PM-9630	PB	Sn	ALL PIN; A =18.0±0.2; B =15.1 Ref; C =1.0±0.1; D =10.2±0.15
TBI-105-01071.1A3	PM-9630	PB	Sn	ALL PIN; A =17.6±0.2; B =15.1 Ref; C =1.0±0.1; D =10.2±0.15
TBI-105-01071.1B3	PM-9630	PB	Sn	CUT PIN # 3,8; A =17.2±0.2; B =15.1 Ref; C =0.35±0.1; D =9.55±0.15
TBI-105-01071.1C3	PM-9630	PB	Sn	CUT PIN#8; A =17.2±0.2; B =15.1 Ref; C =0.2±0.1; D =9.6 MAX
TBI-105-01071.1D3	PM-9630	PB	Sn	CUT PIN#7,8; A =19.2±0.2; B =16.7 Ref; C =0.2±0.1; D =9.6 MAX
TBI-105-01071.1E3	PM-9630	PB	Sn, 成品後必須加鍍	ALL PIN; A =17.6±0.2; B =15.1 Ref; C =1.0±0.1; D =10.2±0.15

TOLERANCE: .X±0.15 .XX±0.10 .XXX±0.05 UNIT : m / m SCALE 3 : 1

Finish: 1. PB wire Immersion Sn on terminal : Thickness:Sn plating,100,5 μm (200 μ inches) min.Base nickel 0.625 μm (25 μ inches) min.  
 2. CP wire Immersion Sn on terminal : Thickness:Sn plating,100,5 μm (200 μ inches) min.  
 3. Coplanarity deviation: 0.10 mm (0.004 inches) max.

REV 4