

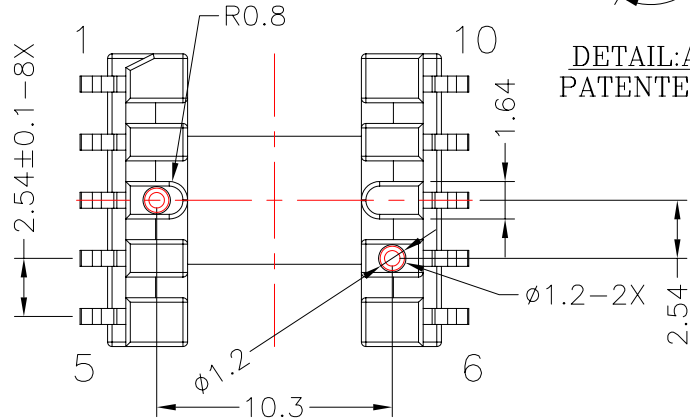
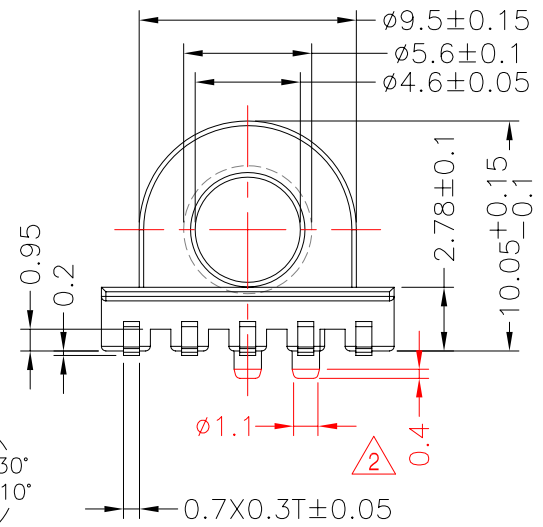
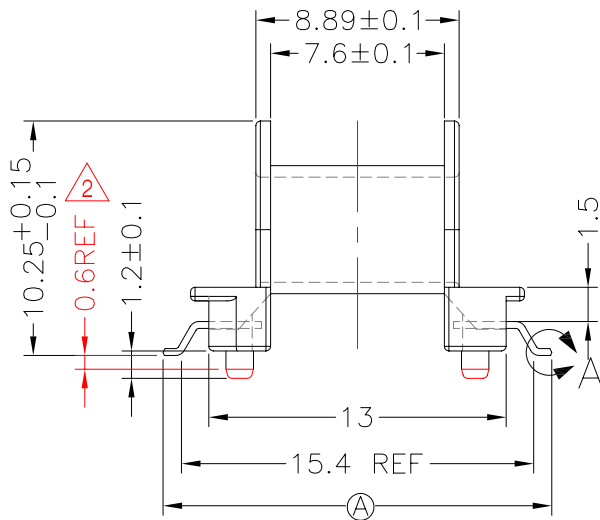
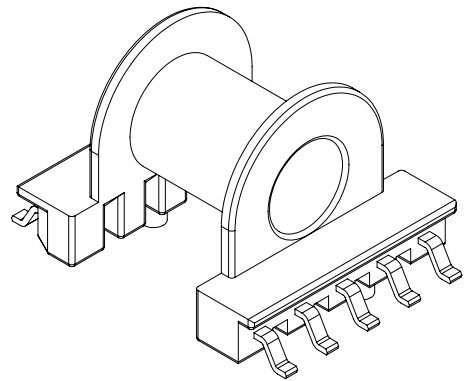
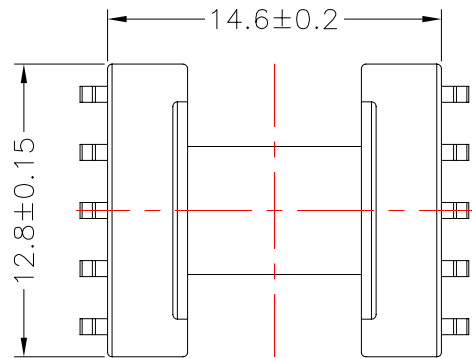


TRANSFORMER BOBBIN
INDUSTRIAL CO.,LTD.

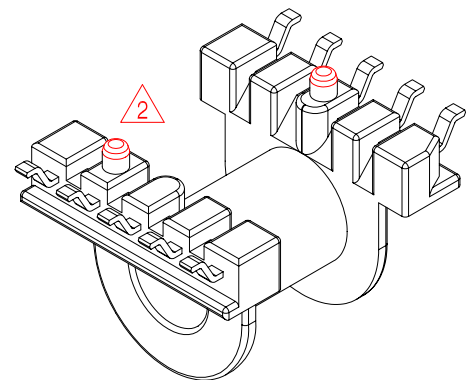
Tel : 86-769-88789999 Fax : 86-769-88789989
http:// tbi-tw.com e-mail : tb6688@ms46.hinet.net

REVISIONS

REV	SYM	DRAFTER	CHECKER	DATE
1		Y.G.HSU	W.H.HSU	03/13/07
2		F.LU	G.F.YANG	04/24/14
3				

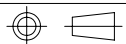


DETAIL:A
PATENTED



DWG NO. EP13-10P-GW-2.54-3B-1

PART NO.	MATERIAL (BOBBIN)	MATERIAL (TERMINAL)	TERMINAL (PLATING)	PIN ALLOCATION	NOTE
TBI-103-03321.103	PM-9630 JT	PB	Sn	ALL PIN (A)=17±0.15	
TBI-103-03321.113	PM-9630 JT	PB	Sn	CUT PIN #3 (A)=17±0.15	H
TBI-103-03321.123	PM-9630 JT	PB	Sn	ALL PIN (A)=18±0.15	



TOLERANCE: .X±0.15 .XX±0.10 .XXX±0.05

UNIT : m / m

SCALE 3: 1

Finish: 1. PB wire Immersion Sn on terminal : Thickness:Sn plating,100,5 μm (200 μ inches) min,Base nickel 0.625 μm (25 μ inches) min.
2. CP wire Immersion Sn on terminal : Thickness:Sn plating,100,5 μm (200 μ inches) min.
3. Coplanarity deviation: 0.10 mm (0.004 inches) max.

REV 2