

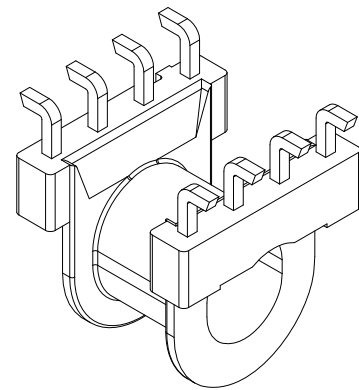
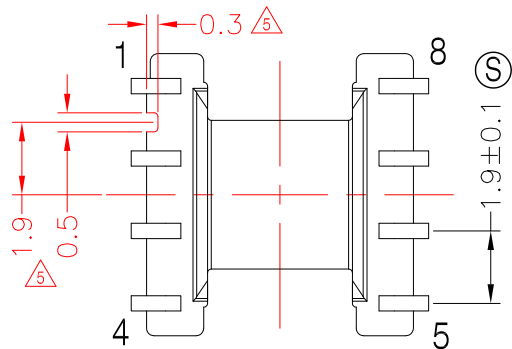
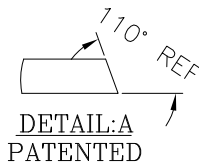
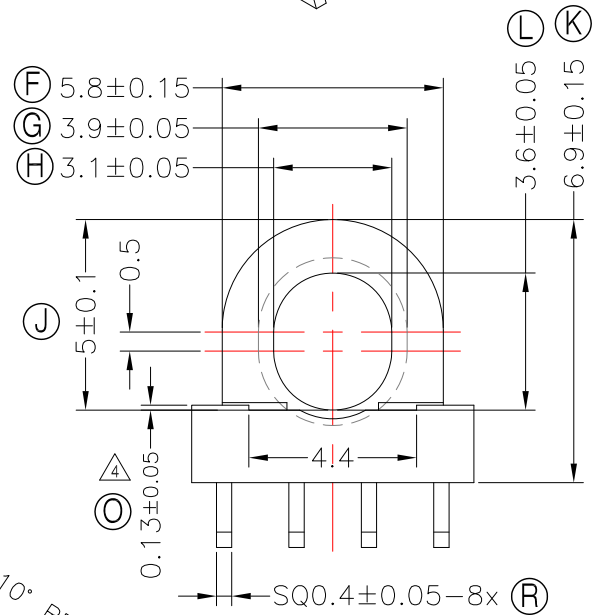
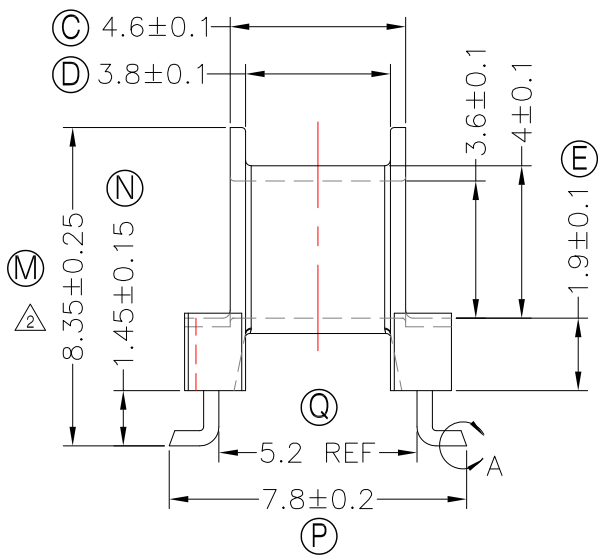
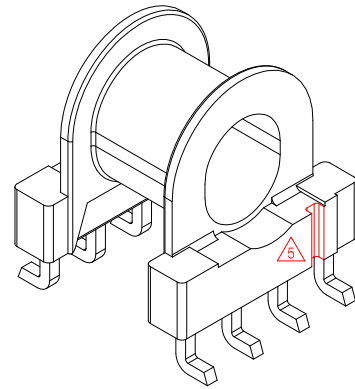
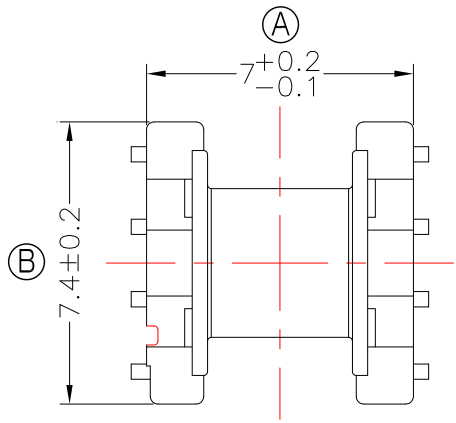


TRANSFORMER BOBBIN
INDUSTRIAL CO.,LTD.

Tel : 86-769-88789999 Fax : 86-769-88789999
http:// tbi-tw.com e-mail : tb6688@ms46.hinet.net

REVISIONS

REV	SYM	DRAFTER	CHECKER	DATE
3		F.LU	G.F.YANG	11/25/14
4		G.F.YANG	W.H.HSU	03/04/15
5		X.H.GU	G.F.YANG	04/28/21



DWG NO. EPX6-8P-L-1.9-C4-11

PART NO.	MATERIAL (BOBBIN)	MATERIAL (TERMINAL)	TERMINAL (PLATING)	PIN ALLOCATION	NOTE
----------	-------------------	---------------------	--------------------	----------------	------

TBI-103-07341.1103	PM-9630	PB	Sn	ALL PIN	
--------------------	---------	----	----	---------	--

H

TOLERANCE: 0<L<4:±0.1 4<L<16:±0.2 16<L<63:±0.3 ANGLES:±1° UNIT : m/m SCALE 5:1

Finish: 1. PB wire Immersion Sn on terminal : Thickness:Sn plating,100%,5 μm (200 μ inches) min,Base nickel 0.625 μm (25 μ inches) min.
2. CP wire Immersion Sn on terminal : Thickness:Sn plating,100%,5 μm (200 μ inches) min.
3. Coplanarity deviation: 0.10 mm (0.004 inches) max.

REV 5