

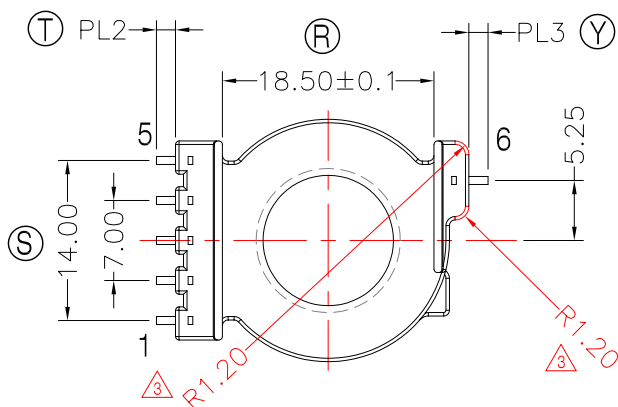
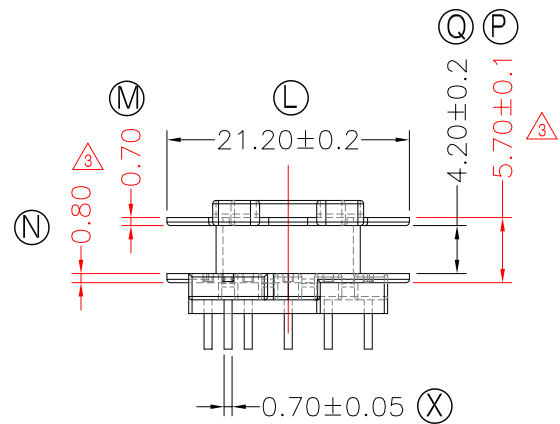
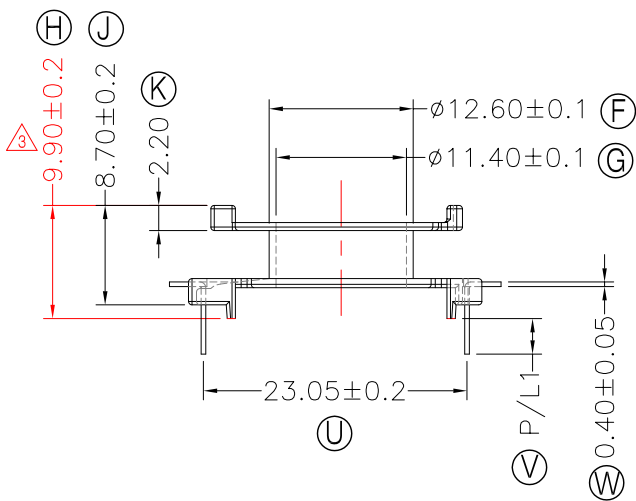
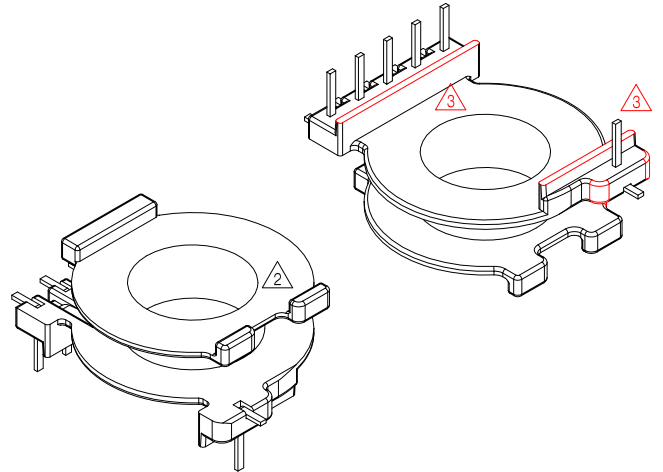
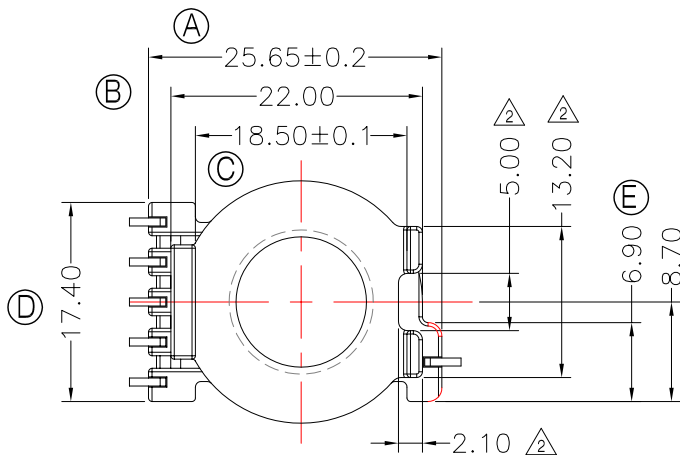


TRANSFORMER BOBBIN
INDUSTRIAL CO.,LTD.

Tel : 86-769-88789999 Fax : 86-769-88789989
http:// tbi-tw.com e-mail : tb6688@ms46.hinet.net

REVISIONS

REV	SYM	DRAFTER	CHECKER	DATE
①		X.H.GU	G.F.YANG	03/04/11
②		X.H.GU	G.F.YANG	07/14/17
③		X.H.GU	G.F.YANG	10/27/17

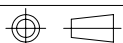


NOTE:

- 1.任意一點強度須1.5kg MIN;
- 2.耐壓4.0Kv /1.5mA 60S;
- 3.焊錫溫度:450°±10° 3SEC
- 4.焊錫前推力:1.0KG MIN,焊錫後推力:1.5KG MIN;

DWG NO. EQ25-11.2-6P-THL-A5-11

PART NO.	MATERIAL (BOBBIN)	MATERIAL (TERMINAL)	TERMINAL (PLATING)	PIN ALLOCATION	NOTE
TBI-235-01151.1106	PM-9630	CP WIRE	Sn	ALL PIN P/L1=3.1±0.2 PL2=1.68±0.2 PL3=1.68±0.2	
TBI-235-01151.1116	PM-9630	CP WIRE	Sn	NO PIN#6 P/L1=5.0±0.2 PL2=1.2±0.2 PL3=1.2±0.2	



TOLERANCE: 0<L<=4: ±0.1 4<L<=16: ±0.2 16<L<=63: ±0.3

UNIT : m / m

SCALE 1 : 1

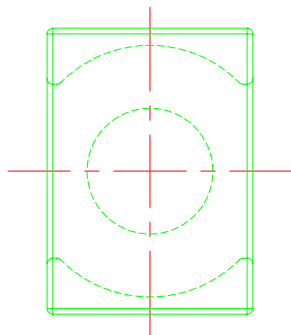
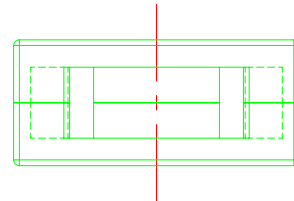
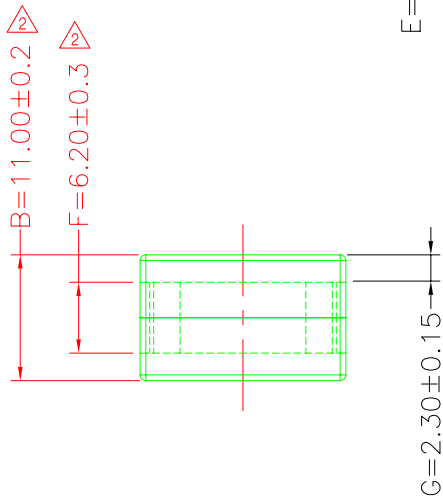
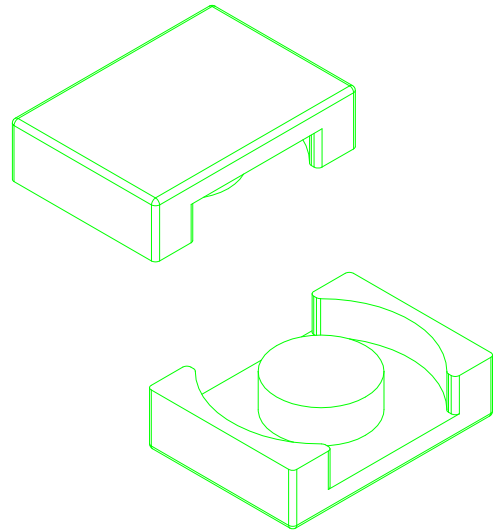
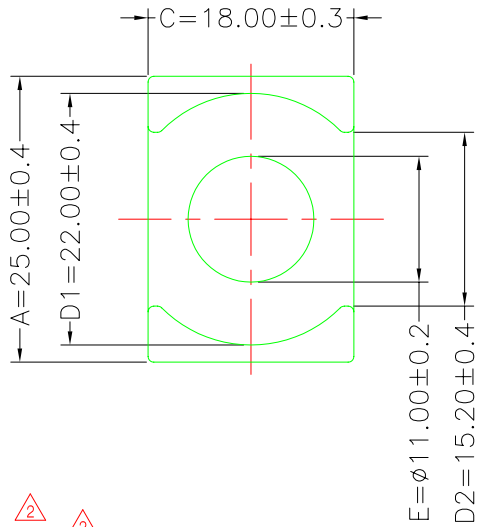
Finish: 1. PB wire Immersion Sn on terminal : Thickness:Sn plating,100,5 μm (200 μ inches) min,Base nickel 0.625 μm (25 μ inches) min.
2. CP wire Immersion Sn on terminal : Thickness:Sn plating,100,5 μm (200 μ inches) min.
3. Coplanarity deviation: 0.10 mm (0.004 inches) max.

REV 3

A-CORE
ELECTRICAL CO.

A-CORE JIANGMEN ELECTRONICS CO.,LTD
 江门安磁电子有限公司
 Tel: 86-750-3867791 Fax : 86-750-3867787

REVISIONS				
REV	SYM	DRAFTER	CHECKER	DATE
①		G.F.YANG	W.H.HSU	11/05/08
②		X.H.GU	G.F.YANG	10/27/17
③				



Core Set Parameters

$A_e = 91.7 \text{mm}^2$
 $L_e = 34.6 \text{mm}$
 $C1 = 0.377 \text{mm}^{-1}$
 $V_e = 3172.82 \text{mm}^3$

DWG NO.	EQ25/11-CORE			
PART NO.	MATERIAL (CORE)			NOTE
EQ25/11	JPP-44A			
EQ25/11	JPP-95			

Finish:	TOLERANCE: 0<L<=4: ±0.1 4<L<=16: ±0.2 16<L<=63: ±0.3	UNIT : m / m	SCALE 1 : 1
			REV 1

A-CORE

A-CORE JIANGMEN ELECTRONICS CO.,LTD
 江門安磁電子有限公司

TBI

TRANSFORMER BOBBIN
 INDUSTRIAL CO.,LTD.

ELECTRICAL CO. Tel : 86-750-3867791 Fax : 86-750-3867787

Tel : 86-769-88789999 Fax : 86-769-88789989

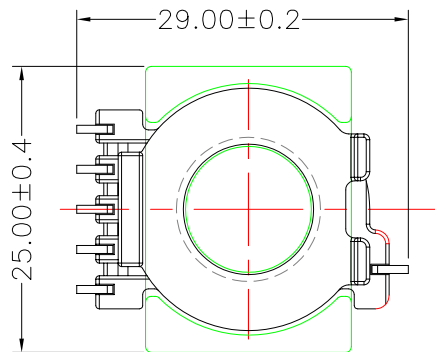
e-mail : sales@acore-ferrite.com

http:// tbi-tw.com e-mail : tb6688@ms46.hinet.net

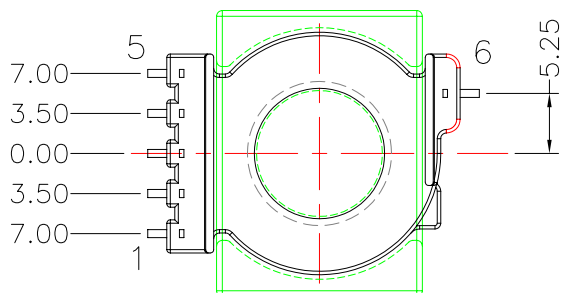
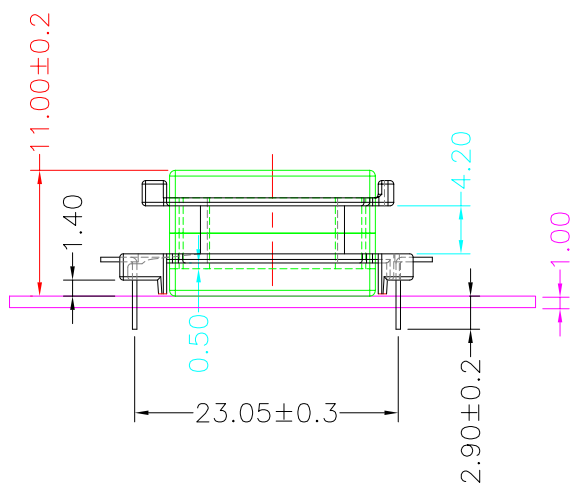
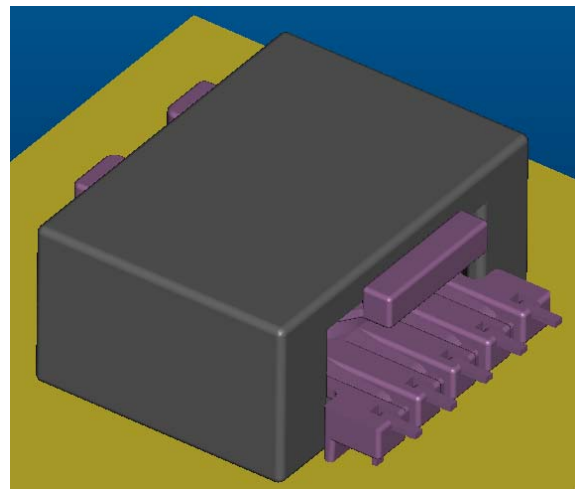
REVISIONS

REV	SYM	DRAFTER	CHECKER	DATE
△1		X.H.GU	G.F.YANG	03/04/11
△2		X.H.GU	G.F.YANG	07/14/17
△3		X.H.GU	G.F.YANG	10/27/17

TOP

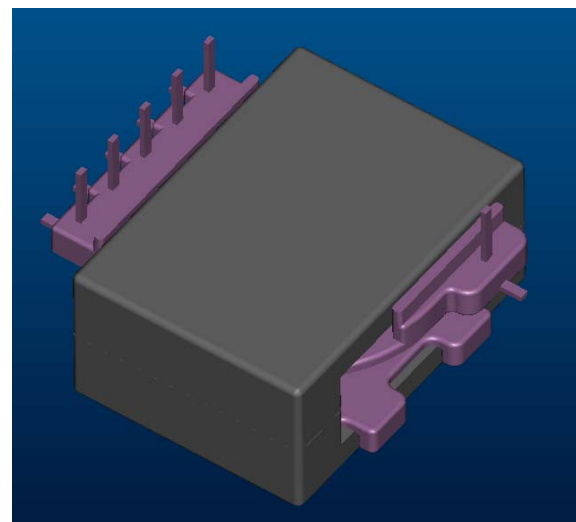


TOP



BOTTOM

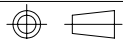
BOTTOM



ITEM	PART NO.	MATERIAL	DWG NO.
CORE	EQ25/11	JPP-44A	
CORE	EQ25/11	JPP-95	
BOBBIN	TBI-235-01151.11XX		EQ25-11.2-6P-THL-A5-11

Core Set Parameters

$A_e=91.7\text{mm}^2$
 $L_e=34.6\text{mm}$
 $C_1=0.377\text{mm}^{-1}$
 $V_e=3172.82\text{mm}^3$



UNIT : m / m

SCALE 1 : 1

REV 3