

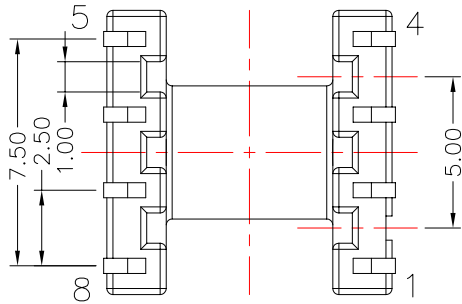
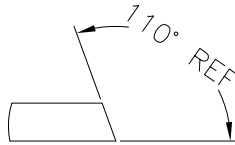
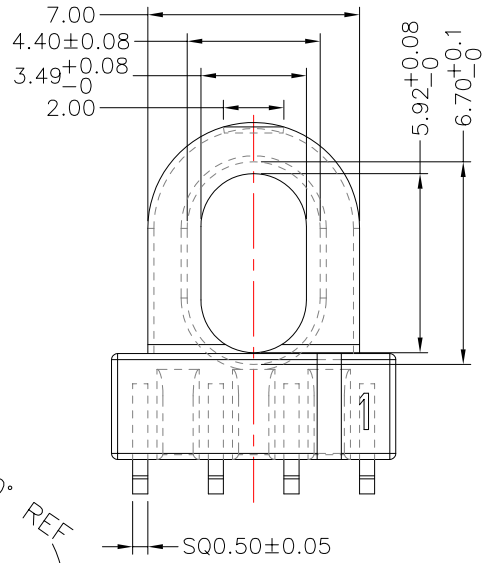
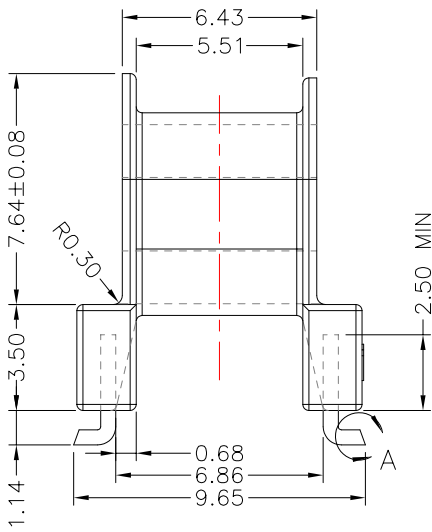
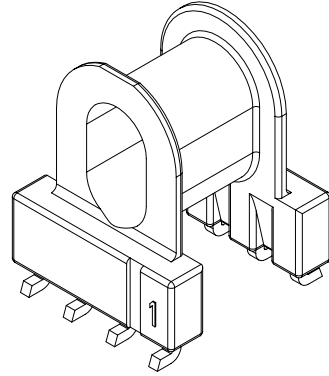
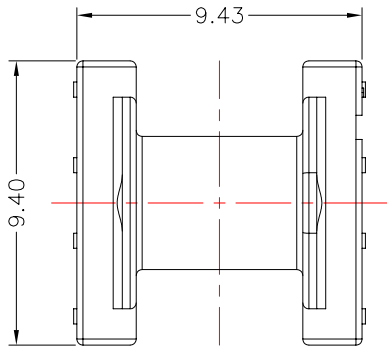


TRANSFORMER BOBBIN
INDUSTRIAL CO.,LTD.

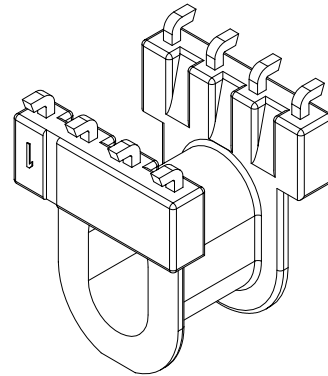
Tel : 86-769-88789999 Fax : 86-769-88789989
http://tbi-tw.com e-mail : tb6688@ms46.hinet.net

REVISIONS

REV	SYM	DRAFTER	CHECKER	DATE
①		S.Y.TANG	G.F.YANG	02/23/08
②				
③				



DETAIL:A
PATENTED



Pin pull-out force : Pin pull-out force per pin 1.0 KG min and average per pin 1.2KG min

DWG NO.	EPX9-8P-L-2.5-A0-11				
PART NO.	MATERIAL (BOBBIN)	MATERIAL (TERMINAL)	TERMINAL (PLATING)	PIN ALLOCATION	NOTE
TBI-103-04101.1103	PM-9630	P.B	Sn	ALL PIN	

TOLERANCE: 0<L≤6 ±0.1 6<L≤30 ±0.2 L>30 ±0.3 Angles = ±1° UNIT : m / m SCALE 4 : 1

Finish: 1. Pb wire Immersion Sn on terminal : Thickness:Sn plating,100,5 μm (200 μ inches) min,Base nickel 0.625 μm (25 μ inches) min.
2. CP wire Immersion Sn on terminal : Thickness:Sn plating,100,5 μm (200 μ inches) min.
3. Coplanarity deviation: 0.10 mm (0.004 inches) max.

REV 1